



Position Description

POSITION TITLE:	Structures Overseer
REPORTS TO:	Infrastructure Works Manager
LOCATION:	Works Depot
WORK AREA:	Infrastructure Works
SALARY LEVEL:	Grade 7
REMUNERATION PACKAGE:	Superannuation On Call Allowance (subject to roster) Access to a range of salary packaging benefits
HOURS OF WORK:	38 hours per week

Our Mission

To meet the challenges of our unique and diverse region

Purpose of Position (purpose / objective of the position)

To act as a primary link between the Infrastructure Works Manager and the structures staff and to coordinate and oversee the structures functions.

Award Provisions

Award: Local Government (State) Award

Award Classification: Band 2 level 2

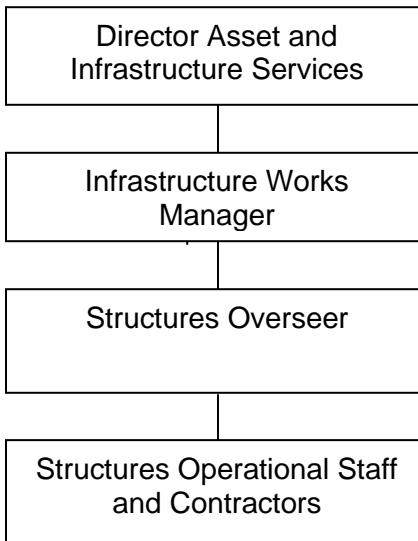
Organisational Relationships:
(the type of client/customer/community relationships that are critical to the effective functioning of the job)

WITHIN DEPARTMENT: Director Assets and Infrastructure Services
Infrastructure Works Manager
Technical and Professional Staff

WITHIN COUNCIL Operational and Technical staff
Salaried Staff

EXTERNAL TO COUNCIL Businesses and suppliers
(e.g. community, business & other government)
Members of the community
Government Departments
Local Businesses and Suppliers
Contractors and Consultants

Organisational Chart: *(Direct reporting relationships)*








Schedule of Duties

- Oversee maintenance and construction activities, allocate resources both labour and plant on a day to day basis so that objectives of works programmes are met.
- Supervise staff and work activities related to bridge construction, maintenance and concrete works and other assets in a safe and operational condition.
- Schedule bridge and other asset inspections, maintenance and construction works in accordance with Council's asset management systems.
- Prepare construction documentation and estimates for minor works.
- Source materials and verify quality requirements and pre-order for timely delivery.
- Prepare sub-contracts for tender purposes and administer selected sub-contractors.
- Undertake periodic surveillance of activities to confirm correct procedures are followed.
- Organise emergency bridge repairs and work overtime when directed.
- Ensure Environmental Protection measures required on the job are effectively implemented and maintained.
- Ensure timesheets are correctly completed and authorised weekly within given timeframe.
- Ensure daily cost sheets are completed and remain within budget.
- Ensure risk assessments are carried out in consultation with staff and agreed control measures are implemented and complied with.
- Ensure appropriate licences and permits to operate plant items and perform specific tasks are held by staff and contractors.
- Ensure Work Health and Safety is practiced in the workplace in accordance with relevant safety standards and Council Policy.
- Maintain close liaison with relevant staff to ensure works are organised in accordance with adopted works programs.
- Ensure communication, co-operation and motivation are maintained within the Structures team.

Capabilities for the role

The Local Government Capability Framework describes the core knowledge, skills and abilities expressed as behaviours, which set out clear expectations about performance in local government: “how we do things around here”. It builds on organisational values and creates a common sense of purpose for elected members and all levels of the workforce. The Local Government Capability Framework is available at <https://www.lgnsw.org.au/capability>

Below is the full list of capabilities and the level required for this position. The capabilities in bold are the focus capabilities for this position. Refer to the next section for further information about the focus capabilities

Local Government Capability Framework		
Capability Group	Capability Name	Level
 Personal attributes	Manage Self	Advanced
	Display Resilience and Adaptability	Intermediate
	Act with Integrity	Adept
	Demonstrate Accountability	Adept
 Relationships	Communicate and Engage	Intermediate
	Community and Customer Focus	Adept
	Work Collaboratively	Adept
	Influence and Negotiate	Intermediate
 Results	Plan and Prioritise	Adept
	Think and Solve Problems	Intermediate
	Create and Innovate	Advanced
	Deliver Results	Intermediate
 Resources	Finance	Intermediate
	Assets and Tools	Adept
	Technology and Information	Intermediate
	Procurement and Contracts	Adept
 Workforce Leadership	Manage and Develop People	Adept
	Inspire Direction and Purpose	Intermediate
	Optimise Workforce Contribution	Intermediate
	Lead and Manage Change	Intermediate

Focus capabilities

The focus capabilities for the position are those judged to be most important at the time of recruiting to the position. That is, the ones that must be met at least at satisfactory level for a candidate to be suitable for appointment.

Local Government Capability Framework		
Group and Capability	Level	Behavioural Indicators
Personal Attributes Manage Self	Advanced	<ul style="list-style-type: none"> • Demonstrates motivation to serve the community and organisation • Initiates team activity on organisation/unit projects, issues and opportunities • Seeks and accepts challenging assignments and other development opportunities • Seeks feedback broadly and asks others for help with own development areas • Translates negative feedback into an opportunity to improve
Relationships Work Collaboratively	Adept	<ul style="list-style-type: none"> • Contributes to a culture of respect and understanding in the organisation • Creates an atmosphere of trust and mutual respect within the team • Builds cooperation and overcomes barriers to sharing across teams/units • Relates well to people at all levels and develops respectful working relationships across the organisation • Identifies opportunities to work together with other teams/units • Acts as a resource for other teams/units on complex or technical matters
Results Deliver Results	Intermediate	<ul style="list-style-type: none"> • Takes the initiative to progress own and team work tasks • Contributes to the allocation of responsibilities and resources to achieve team/project goals • Consistently delivers high quality work with minimal supervision • Consistently delivers key work outputs on time and on budget
Resources Assets and Tools	Adept	<ul style="list-style-type: none"> • Contributes quality information about council and community assets to asset registers • Prepares accurate asset maintenance and replacement costings in line with council plans and policies • Is aware of asset management risks and actions to manage and mitigate these

Local Government Capability Framework

Group and Capability	Level	Behavioural Indicators
Workforce Leadership Manage and Develop People	Adept	<ul style="list-style-type: none"> • Seeks to understand the individual strengths, weaknesses, goals and concerns of team members • Defines and communicates roles and responsibilities and sets clear performance standards and goals • Coaches team members to help improve performance and development • Regularly discusses performance with team members and provides accurate, constructive reviews • Identifies suitable learning opportunities, including stretch assignments, based on individual needs, interests and goals • Addresses team and individual performance issues, including unsatisfactory performance, in a timely and effective way

Essential and Desirable Criteria

Essential:

- Relevant Trade qualification and or demonstrated extensive experience in bridge maintenance and construction and concrete works activities.
- Demonstrated ability to schedule inspections, maintenance and construction works in accordance with bridge asset management systems.
- Ability to coordinate plant and labour resources to ensure efficient running of works.
- Demonstrated ability to prepare documentation, determine materials, equipment and other resources, design drawings, quantity schedules, specifications and cost estimates for minor works.
- Demonstrated ability to source materials and verify that they comply with quality requirements, and arrange for additional resources when needed and the delivery of pre-ordered materials.
- Experience in the preparation supply / sub-contract documentation and administering sub-contractors.
- Experience in the supervision of staff and sub-contractors.
- High level of oral and written communication skills
- Working knowledge of Work Health and Safety Act and Environmental Protection Act, Risk, Quality and associated regulations and the ability to apply these requirements to a work situation.
- Work Health & Safety WorkCover General Induction Ticket (White Card)
- Drivers Licence Class C

Desirable:

- Experience in Local Government
- Certificate IV in Frontline Management or equivalent
- Relevant WorkCover certificates e.g. Scaffolding, Rigging, Formwork.
- Proven project management skills
- Traffic Control Ticket

Verification of Qualifications

Guidelines:

- All original certificates and / or tickets must be sighted by Council. Cost of providing documentation is to be borne by applicant.
- Falsely claiming qualifications/tickets will lead to dismissal.
- Applicants are to sign a declaration that states qualifications are genuine and acknowledge that false claims can lead to dismissal.

Working with Children Check

The position is subject to the requirements of the Child and Young Person Protection legislation and all applicants will be required to complete a Prohibited Employment Declaration at the time of their application.

Job Specific Skills and Performance Standards Required

NB: This section of the position description will be used to assess staff in the job specific skills. Staff are expected to have achieved the performance standard required of all skills within each step before progression to the next step.

Skills	Performance Standard Required
Entry Level	
Answer and process enquiries/requests from Council staff and managers on all aspects on structures.	<ul style="list-style-type: none"> • Answers/requests for action or information are handled assertively and diplomatically using correct protocols, and confidentiality is maintained where appropriate. • Accurate information is recorded or relayed to provide the service requested. • All processes involved are carried out within the agreed Council timeframes.
Oversee structures operations.	<ul style="list-style-type: none"> • All work carried out by the structures team is performed in an acceptable manner. • Council policies and procedures are followed. • Work is carried out complies with Council's WHS, risk and environmental and quality management system and relevant legislation. • Staff are wearing appropriate safety wear when undertaking work. • Staff are operating plant and equipment in a safe manner. • Staff have appropriate training and experience in using equipment and environmental management techniques. • Other staff, contractors and the public are kept safe while using the facility.
Undertake and observe employment conditions and Council Human Resources Policy and procedures (such as rules regarding alcohol consumption during work, using plant items for work use only, wearing issued uniform)	<ul style="list-style-type: none"> • Able to interpret regularly used employment conditions, policies and procedures • Adheres to Employment Conditions and Council Policies and Procedures. • Conducts all areas of work practices and procedures in a manner that conforms to Council principles and practice of Equal Employment Opportunity, Environmental protection and Ethical Conduct.
Undertake duties as required	<ul style="list-style-type: none"> • Work is undertaken according to council specifications • Equipment is used according to Council's WHS procedures • Work is carried out with regard to stated timeframes. • Work is undertaken according to design specification and instructions concerning quality and quantity.

Skills	Performance Standard Required
Operate plant and equipment	<ul style="list-style-type: none"> • Understands the use of and is able to use small plant and equipment (such as power tools and air compressors) regularly used in work. • Understands the basic maintenance of small plant regularly used. • Uses equipment according to manufacturer's specification and/or Council policies and procedures. • Stores all equipment, tools and machinery safely, properly and securely in compliance with manufacturer's and/or Council guidelines. • Reports any faults or problems to the Plant and Depot Coordinator.
Carry out basic maintenance of plant and equipment.	<ul style="list-style-type: none"> • The performance of plant and equipment is monitored and deficiencies are reported. • Routine preventative maintenance is carried out in accordance with requirements. • Basic repairs and adjustments to plant and equipment are made in accordance with manufacturer's specifications. • Records of repairs and maintenance are maintained as required. • Recurring problems are reported to Plant and Depot Coordinator.
Operate a motor vehicle	<ul style="list-style-type: none"> • Possesses a relevant motor vehicle licence • Able to demonstrate a safe track record in driving. • Maintains vehicle to promote professional image. • Maintains record of use on timesheet.
Step 1	
Structures coordination	<ul style="list-style-type: none"> • Bridge construction and maintenance and other concrete works are scheduled and undertaken in accordance with Council's asset management systems. • Scaffolding, rigging and formwork are undertaken safely in accordance with WorkCover and Council safety requirements. • Prepares construction documentation for works. • Identifies and obtains relevant materials and verifies quality requirements. • Undertakes periodic surveillance of activities to confirm correct procedures are followed. • Organises emergency bridge repairs and ensures limited road closures during these instances. • Installs engineering survey controls, set out and monitors line and levels. • Maintains a close liaison with relevant senior staff to ensure works are organised in accordance with adopted works programme.
Manage Staff	<ul style="list-style-type: none"> • Feedback to staff is immediate and appropriate. • Staff are motivated to repeat exceptional performance and to improve poor performance.

Skills	Performance Standard Required
Manages sub-contractors	<ul style="list-style-type: none"> • Tasks / Jobs are monitored to ensure compliance with plans in terms of time, quality assurance issues and organisational requirements. • Guidance is provided to contractors in a timely manner and accordance with plans. • Construction activities are monitored to ensure compliance with WHS and environmental regulations. • Construction progress is monitored and records maintained in accordance with organisational standards. • Changes to meet unforeseen requirements, resources reallocation/rescheduling and the extent of the change are communicated promptly for approval according to organisational procedures. • Unsatisfactory performance is identified and prompt action to rectify the situation is taken. • Completion of construction/ contract is confirmed and certified in accordance with Council's policies and procedures.
Read and Interpret Maps, Plans and Drawings	<ul style="list-style-type: none"> • Ensures that work is undertaken according to plans provided. • Is able to use sound judgment to interpret situations and find acceptable solutions to basic problems when instructions are not clear. • Is able suggest more appropriate ways of undertaking work.
Assist with section financial management	<ul style="list-style-type: none"> • Finances are managed within set budgets. • Significant budget deviations are identified and rectified within Council timeframes. • Maintains daily cost control sheets. • Staff are advised of budget and expenditure allocations.
Internal Control and Purchasing	<ul style="list-style-type: none"> • Is aware of Council's internal control policies and procedures. • Work carried out adheres to council's internal control policies and procedures. • Purchasing is carried out in accordance with Council's policies and procedures and within delegated authority. • Breaches of internal control are investigated and reported to the appropriate Infrastructure Works Manager. • Negotiates prices and arranges the delivery of goods and services with suppliers and customers. • Correct job numbers and account codes for purchases are recorded in the appropriate management information system.
Control and Direct Traffic	<ul style="list-style-type: none"> • Ensures traffic is directed in a courteous and professional manner in accordance with Council policies. • Ensures work area conditions are constantly monitored to ensure safe and secure operations. • Ensures safety signs and barriers are in place at the worksite. • Ensures staff have appropriate training and equipment to control and direct traffic. • Identifies discrepancies / risks in traffic control plans and recommends amendments to Infrastructure Works Manager.

Skills	Performance Standard Required
Investigate and resolve customer complaints and requests	<ul style="list-style-type: none"> • Establishes details of the complaint / request. • Resolves routine issues; refers issue to the relevant officer if resolution not possible. • Identifies and implements appropriate options for resolving the complaint or dealing with the request. • Records an accurate summary of any complaint.
Coordinate Resource Allocation and Usage	<ul style="list-style-type: none"> • Resources are allocated based on the assessment of current workloads and staff needs against circumstances, skills, experience and resources available. • Effective allocation and acquisition of resources is supported and endorsed with team and colleagues. • Resource allocations enable the achievement of work objectives. • Resource allocation complies with Council policies and procedures and legislation. • Resource allocation issues are identified and addressed.
Step 2	
Report Writing	<ul style="list-style-type: none"> • Reports are prepared for Bridge construction, maintenance and other concrete works when required. • Reports are clear and concise. • Reports are prepared within agreed timeframes and to the required format.
Undertake Estimation and Costing.	<ul style="list-style-type: none"> • Details of the project requirement are obtained and agreed. • Details are recorded in accordance with Council procedures. • Types and quantities of materials required for the project are estimated. • Labour requirements to achieve the project are estimated. • Time requirements to undertake the work are estimated. • Total materials, labour and overhead cost allowances are calculated in accordance with Council procedures. • Final cost is calculated and reported to Infrastructure Works Engineer. • Details of costs and charges are documented in accordance with Council procedures. • Job cost approval is obtained from Infrastructure Works Engineer prior to commencement of project.
Customer Service	<ul style="list-style-type: none"> • Responds promptly to more complex enquiries and gives correct advice and information using appropriate communication methods. • Uses advanced communication skills to deal with difficult situations.

Skills	Performance Standard Required
Inspections and Reporting	<ul style="list-style-type: none"> • Inspection of Council assets is undertaken to meet asset inspection schedule requirements. • Assets are inspected and maintenance requirements are identified and assessed and reported to Infrastructure Works Manager for prioritisation. • Problems and faults are recorded in accordance with Council requirements. • Requirements for maintenance are prioritised to ensure public safety and preservation of the assets. • Reports are prepared that outline rectification details. • Reports are clear and concise and are written to the format required and in the timeframe agreed.
Development of safe work method statements.	<ul style="list-style-type: none"> • Documentation is prepared to formalise processes for achieving objectives. • Feedback is sought on the content and presentation of the SWMS. • Consideration is given to the user and the environment in which the SWMS will be used. • Feedback is sought on the content and presentation of the SWMS. • SWMS are updated and modified as required to match current operations. • Draft of SWMS is forwarded to Risk and Safety Officer.
Step 3	
Prepare sub-contracts and quotes	<ul style="list-style-type: none"> • Prepares sub-contracts for tender purposes and administer selected subcontractors. • All available information is obtained from the supplier. • Project specifications are identified from the details supplied. • Scope of the job is defined by review of details supplied. • Appropriate personnel are consulted for input into the tender bid quote. • Resource requirements to complete the works are identified. • Estimations are detailed in accordance with established procedures and requirements, balancing time, cost, quality and quantity against specifications. • Bid is prepared according to identified format and organisational requirements • Quote information is collated and prepared in an appropriate format.
Implement Change	<ul style="list-style-type: none"> • Change is communicated to stakeholders. • Training requirements are identified to support change. • Change is implemented in accordance with appropriate guidelines, procedures and policies.

Skills	Performance Standard Required
Assist with Budgeting and Forecasting	<ul style="list-style-type: none"> • Assist with the preparation of budgets and financial forecasts for engineering works programmes. • Information is collected and analysed in the required timeframe. • Feasible optional strategies are identified which accord with team goals. • Budget expenditure requirements are established in accordance with organisational goals and policies. • Budget forecasts are prepared in time to be included in organisational planning timeframe.
Leads a team	<ul style="list-style-type: none"> • Develops and actively maintains team harmony. • Resolves conflict in the team. • Gives credit or recognition to encourage and empower the team. • Ensures that working hour arrangements and award conditions are strictly adhered to by all subordinate staff.
Risk Management and Problem Solving	<ul style="list-style-type: none"> • Identifies and classifies possible sources of risk. • Identifies problems proactively and puts in place appropriate strategies to mitigate them. • Negotiates with multiple stakeholders where appropriate to solve issues. • Applies a range of problem solving skills to enable issues to be resolved without contravening any statutes, regulations or council policies.
Undertake Process Improvement	<ul style="list-style-type: none"> • Processes are monitored and inconsistencies are identified by comparing processes for similar tasks. • Ideas for improvement are given prompt consideration and discussed with Infrastructure Works Engineer prior to proceeding with proposed changes. • Ideas are discussed and evaluated with staff to determine viability. • Ideas are assessed against existing practice, precedent and any legislative or Council restrictions. • Judgment is used on the assessment of ideas. • Relevant staff are involved so that all aspects can be considered. • Regular opportunities are provided to consider alternative approaches to process improvement. • Change is monitored to see that anticipated benefits are realised. • All areas affected by change are advised promptly to minimise disruption and encourage commitment.
Use of Technology	<ul style="list-style-type: none"> • Able to use organisational software packages (eg. Word, Excel, Outlook) to facilitate work.
Step 4	
Project Planning and Management	<ul style="list-style-type: none"> • Gives advice on appropriate ways to undertake a project including costings, time, equipment and materials. • Prepares project plans. • Manages projects in a manner that minimises disruption to the Council. • Ensures that the project comes in on time and to the budget.

Skills	Performance Standard Required
Quality Customer Service & Communication Skills	<ul style="list-style-type: none"> • The needs of the customers are researched, understood and assessed and included in the planning process. • Staff are mentored to enable them to meet customer service standards. • Customer feedback is sought and used to improve the provision of services. • Resources are used effectively and efficiently to provide quality products and services to customers. • Maintains a close liaison with relevant supervisors to ensure works are organised in accordance with adopted works programme. • Effectively communicates to achieve cooperation and motivation within the team.
Develop and Apply Knowledge	<ul style="list-style-type: none"> • Keeps up to date with advances in the area of expertise and what is happening in related industries. • Distributes information to other staff regarding developments in the work area. • Has a wide and practical understanding of bridge construction and maintenance, concrete works, traffic facilities, plant operation capabilities and risk and environmental requirements. • Apply knowledge successfully in the maintenance of Council's assets. • Uses knowledge to ensure works are up to date with legislative changes and new standards.
Development of work Procedures Guides.	<ul style="list-style-type: none"> • Manuals and user guides are accurate and user friendly. • Consideration is given to the user and the environment in which the manual/guide will be used. • Feedback is sought on the content and presentation of the manual/guide. • Manuals and guides are updated and modified as required to match current operations.
Assists with preparation for legal proceedings/actions (eg public liability claims)	<ul style="list-style-type: none"> • Writes reports and retains records to a standard that they can be used as evidence in legal proceedings. • Participates in legal proceedings in line with delegated authority, Council policies and procedures. • Acts as a witness in the Court.

Acceptance of Position Description

I, _____, have read and understood this position description and agree to the conditions and responsibilities contained in it. I intend to commence duties as Structures Overseer on _____ (date)

Signed: _____

Date: _____