



The upgrade project on Bruxner Highway near Rogers Road, is continuing on schedule. Works include culvert replacement, construction of new drainage infrastructure as well as new pavement on a 1.5km section of the highway.

**In this  
ISSUE**

**ELECTION  
DEADLINE  
LOOMS**  
- 2 -

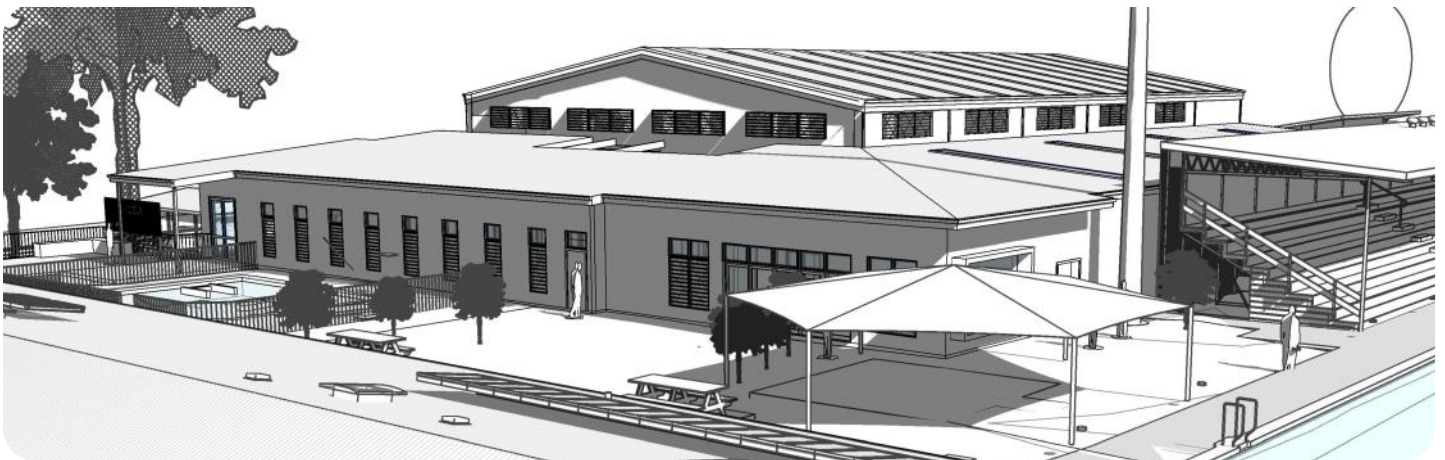
**WORK STARTS  
ON BRIDGE  
PROGRAM**  
- 3 -

**VACANCIES ON  
CLIMATE  
GROUP**  
- 3 -

**ALLCOCKS  
BRIDGE A  
WORLD FIRST**  
- 4 -

**WHAT'S ON AT  
THE ROXY**  
- 6 -

**GRANT  
APPLICATIONS  
NOW OPEN**  
- 7 -



*An artists impression of the multi-purpose community sports stadium.*

## \$4.5 MILLION GRANT FOR multi-purpose sports stadium at Kyogle

Kyogle is to get a multi-purpose community sports stadium featuring a 25-metre indoor pool, a hydrotherapy pool, and community gym thanks to a \$4.5 million grant through the Bushfire Local Economic Recovery (BLER) Package.

The Health and Wellbeing Hub, to be built on the Kyogle pool precinct, will also serve as an emergency evacuation centre for the wider district during natural disasters.

Council will contribute \$1.5 million of its own funds to the \$6 million project, which has been designed to be fully accessible.

Work on the Health and Wellbeing Hub, which has been on the drawing board in one form or another for a number of years, is expected to start next year and be completed by June 2023.

Meanwhile, Council also received almost \$1 million under BLER to improve the Tabulam and Woodenbong Sports Grounds and Bonalbo's Norman Johnston Oval.

The value of the total project is worth \$1.48 million with the

**Continued Page 2**



## Village sports grounds to get \$1.4M UPGRADE

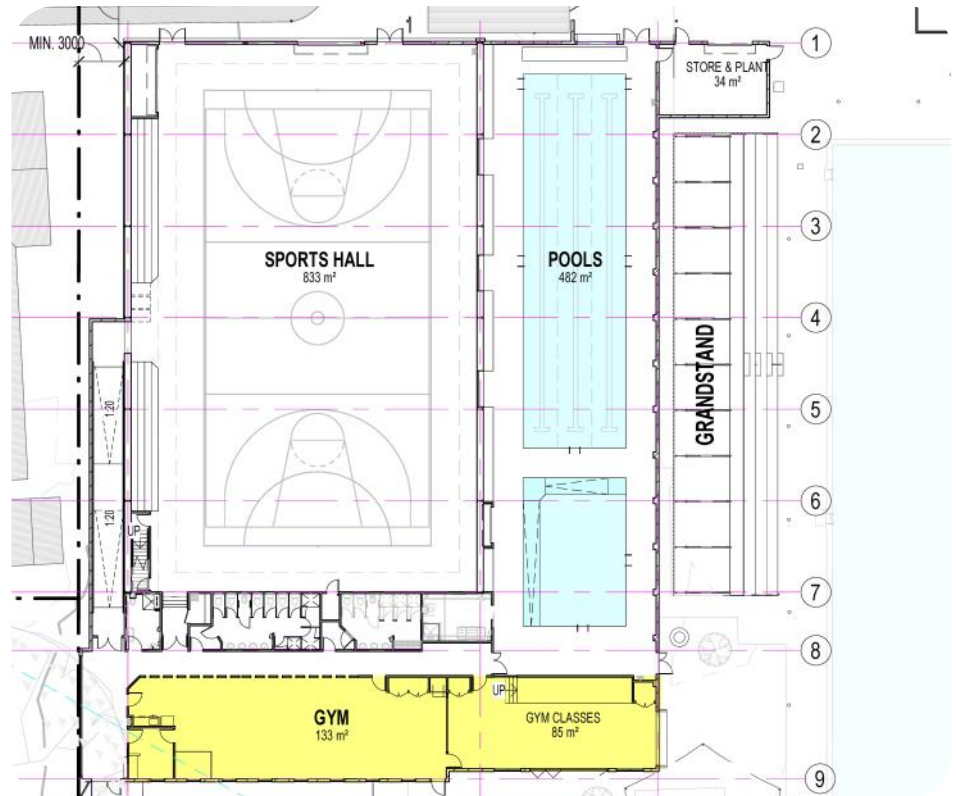
From Page 1

remaining works funded through the Australian Government's Local Roads and Community Infrastructure Program. Improvements to the three sports grounds include:

**Tabulam Sports Ground** - installation of lighting; renovations to the existing kiosk and clubhouse; installation of an electric barbecue, shelter and seating; installation of a shade structure over the playground; new rugby goal posts; aerate, top dress and level the main oval.

**Woodenbong Oval** - installation of lighting; new playground equipment and soft-fall; installation of shade over the play equipment; new rugby league goal posts; new pool fencing; a mural; and aerate, top dress and level the main oval.

**Norman Johnston Oval** - Install a aerator fountain on stormwater dam; build a viewing platform on the dam; clean and dredge the dam; installation of shade over playground equipment; new pool fencing; a mural.



The projects will build upon recently completed open spaces master planning processes, climate change adaptation strat-

egies, and adverse event planning to complete the priority improvements to these vital community facilities.

## ELECTION deadline looms

People thinking about standing for Kyogle Council at the 4 September 2021 Local Government elections have until noon Wednesday, 4 August to nominate as a candidate.

The NSW Electoral Commission, which will conduct the election, is urging candidates to nominate on-line using its online nomination system.

To find out more, go to <https://elections.nsw.gov.au/Elections/Local-government-elections/Local-Government-Elections-2021>

For those people who can't nominate online, paper nomination forms can be downloaded from the NSW Electoral Commission's website or you can phone 1300 022 011.



**Save the date**  
**2021 NSW Local Government elections**

**Saturday 4 September**

Voting is compulsory

[elections.nsw.gov.au/lge21](https://elections.nsw.gov.au/lge21)  
1300 135 736



People wanting further information about the obligations of candidates in the local government elections are encouraged to read the Candidate Handbook which is also available on the NSW Electoral Commission's website at <https://elections.nsw.gov.au>

Postal vote applications also have opened for the 4 September elections and will close at 5pm on Monday 30, August.

Those eligible may apply for a postal vote online at [elections.nsw.gov.au](https://elections.nsw.gov.au). For voters with access to the internet, this is the most efficient way to apply for a postal vote.

People may also contact the NSW Electoral Commission call centre on 1300 135 736 and have a call centre operator complete the online application on their behalf.

For the Kyogle Council election, candidates will be vying for three Councillor positions in A, B and C Wards.

A pre-poll polling booth for all three wards will operate in the Kyogle Memorial Institute in Stratheden Street, Kyogle, from Monday 23 August to Friday 3 September.

It will be open from 9am-5pm Monday to Saturday and is fully wheelchair accessible.

On the day of the election,

people can lodge their vote at the following locations:

### A Ward

Cawongla Pre-School; Kyogle Memorial Institute Hall

### B Ward

Wiangaree Hall, Kyogle Memorial Institute Hall

### C Ward

Bonalbo District Community Hall; Mallanganee Memorial Hall; Tabulam Public School; Wiangaree Hall; Woodenbong Public Hall; and Kyogle Memorial Institute Hall.

Polling booths will open from 8am-6pm.

Please note that voting is compulsory.

Meanwhile, the NSW Electoral Commission has announced it will introduce measures to safeguard the health, safety and wellbeing of voters, election staff, candidates, and scrutineers at the 4 September poll.





## Bridge program off to a FLYING START

Council's bridge replacement program is off to a flying start with two load-limited bridges being replaced and work starting on a third bridge which has been kept open until now with temporary repairs.

The long-awaited Mathews Bridge has been completed replacing the old 25 tonne load limited bridge which severely impacted commercial operations of orchards in the Green Pigeon Valley.

The new bridge is a two-lane concrete structure built to the new loading code, significantly increasing serviceability and commercial efficiency.

Haystack Creek Bridge has also been completed, replacing the old two-tonne load limited timber bridge which has inconvenienced locals for a number of years.

The new concrete bridge will enable residents on Yabbra Road the ability to develop their commercial ventures – something which was next to impossible with the old load-limited bridge.

The new bridge also brings piece of mind in the event of fire or other emergencies, providing a safe access to emergency services.

Meanwhile, work has started on a new bridge on Leesies Road.

The old bridge was given a temporary repair previously, effectively a bridge was built on a bridge, to provide access to



*The new Mathews Bridge, above, replaces a load-limited timber bridge which severely impacted the lives of people living in the Green Pigeon Valley and commercial orchard operations.*



*The new concrete bridge on Yabbra Road over Haystack Creek.*



*The old bridge on Leesies Road effectively had a bridge built on a bridge as a temporary repair.*

cropping and other high intensity agribusinesses.

When the bridge initially failed these businesses were severely impacted and

their ongoing viability threatened.

The new bridge, which is expected to be completed in 6-8 weeks, will ensure access to these businesses for the next 100 years.

## FLYING FOX plan to be developed

Council is asking the community to complete an on-line flying-fox questionnaire as part of a project to develop a Flying-fox Camp Management Plan.

The plan will focus on the flying-fox camp along Fawcetts Creek at the northern end of Kyogle, extending along the Kyogle Recreation Reserve, Kyogle Apex Park and Rest Area and Kyogle Showground.

It will guide flying-fox management at the site, with a focus on reducing current and future conflicts between flying-foxes and humans.

The plan also will help Council obtain

approvals for on-ground works, and apply for grant funding from the State and Federal governments.

The questionnaire is available at: <https://www.kyogle.nsw.gov.au/infrastructure-environment/environment/flying-foxes/> and can be completed until 4pm Friday, 20 August 2021.

It aims to identify issues concerning the camp and preferred management options.

Council has also conducted an online forum as part of its community engagement work to develop the plan. The forum included presentations by a local ecologist from GeoLINK, NSW Health and North Coast Local Land Services.

For further information, contact Council's Senior Environmental Services Officer, Judy

Faulks on 02 6632 1611 or email [judy.faulks@kyogle.nsw.gov.au](mailto:judy.faulks@kyogle.nsw.gov.au).





## New Allcocks Bridge is A WORLD FIRST

Council has recently completed the replacement of the Allcocks Bridge on Bentley Road.

This new modular precast bridge, *pictured right*, is a world first proof-of-concept that does away with traditional bearings, transferring the load directly to the pile group, and an Australian-first in the concrete material used.

This innovative design was able to be installed within two weeks rather than traditional onsite construction of three months, reducing the disruption to the travelling public.

The design benefits also will save Council significant ongoing maintenance costs into the future.

The bridge is built to the new AS5100 Bridge Code with the maximum design loading of SM1600 to handle a load of up to 160 tonnes, future proofing it against newer larger vehicles that may gain access to the road network.

With Council's commitment to proactively facing the global climate challenge by integrating sensible real-world solutions into our everyday business, All-



cocks Bridge also dramatically contributes less CO<sub>2</sub> entering the environment, having been precast out of *Earth Friendly Concrete (EFC)*.

This geopolymer product is starting to gain traction in Australia reducing the CO<sub>2</sub> footprint of traditional concrete by up to 80 per cent.

Traditional concrete is currently 8 per cent of total worldwide CO<sub>2</sub> emissions.

Allcocks Bridge is the first EFC bridge built in Australia saving the environment

15 tonnes of CO<sub>2</sub> emissions or the equivalent to planting 250 trees.

The benefits to Kyogle ratepayers the new Allcocks Bridge on Bentley road has delivered are:

- It has been delivered onsite in two weeks;
- Contributes 80% less CO<sub>2</sub> than a normal bridge;
- The cost of EFC is about the same as traditional concrete; and,
- It has no/minimal ongoing maintenance.

## WASTE LESS recycle, reuse more

In the next few editions of our community newsletter we will be running a series of articles on recycling. It's time for us to start thinking about our waste and make a big difference by throwing away less.

It is important for everyone to know and understand how to recycle the right way, so we can keep our recycling and organic bins free from contamination.

We all have a part to play in our war on waste, but together, and with small changes along the way, we can make a big difference.

You can use the Waste Hierarchy, *pictured*, to help you on your journey to waste less and recycle more.

**Part 1: Avoidance** – We can all take action to reduce and refuse the amount of waste generated in the home, business and at school.

**Part 2: Resource recovery** – We can all reuse, recycle, resell or donate at home. Think about whether or not someone else may find value in it, before throwing it in the bin.

**Part 3: Disposal** – We can all manage our waste correctly, by disposing of each item in the most environmentally responsible manner (make sure it goes in the correct bin and all recyclable items are cleaned).

The simplest way to manage waste is to create less in the first place.

By buying less and avoiding unnecessary packaging, you can help to avoid and minimise waste.

### WASTE HIERARCHY



If that is not possible, think about reusing or repairing before buying new. In many cases this is cheaper in the long run.

Next you can recycle and help Council recover waste.

It is something that we can all do.

Make sure you know what goes in each bin and check out our recycling webpage for more

information: <https://www.kyogle.nsw.gov.au/>

**Fact of the month**—Australia is the second-largest producer of waste per capita in the world.

**Tip of the month**—Stop, think and reflect.

Every waste less journey is different, creating a challenge is a fun way to start and even more so when you are doing it with friends and family.

**Resources to get you started—**

Try the RecycleSmart app to help you understand and sort your waste better at home.

Watch Craig Reucassel's, television documentary 'War on Waste' on iView, for mind-blowing facts on our world of waste.

Read the 'Waste Not' book by Erin Rhoads, to see how far you can go on your waste less journey.



## NEW RULES FOR submitting DAs to Council

Council is reminding the community that, following changes to planning legislation by the NSW State Government, it is now mandatory for all development applications to be submitted to Council and via the NSW Planning Portal. This includes:

- development applications
- applications to modify a development consent (section 4.55 applications)
- complying development applications
- Construction Certificate applications
- Subdivision Works Certificate applications
- Subdivision Certificate applications, and
- Occupation Certificate applications.

Proponents will be able to track the progress of their application with Council,



view and respond to communications from Council about their application and obtain copies of relevant approvals and certificates.

To use the portal you will need to register for a portal account with the NSW Government.

Once you have registered, you will be able to log in to the portal, complete an online

application form and upload any documents required to support your application such as a Statement of Environmental Effects, planning reports, engineering plans and drawings and technical assessments.

You are still required to prepare and submit all documentation that would normally be required to accompany an application submitted to Council in hard copy – the only difference is now your application must be submitted electronically via the portal.

For further information on the Planning Portal including instructions on how to lodge a development application, please visit <https://www.planningportal.nsw.gov.au>.

If you have any difficulty using the Online DA Service, please contact the ePlanning support team at [eplanning@planning.nsw.gov.au](mailto:eplanning@planning.nsw.gov.au).

## Two community vacancies on Council's CLIMATE CHANGE GROUP

Kyogle Council is seeking expressions of interest (EOI) from community members interested in joining the Climate Change Working Group.

The working group is made up of three Councillors, relevant council staff and six community members from groups concerned with: science, commerce and industry, Indigenous representation, community and youth. Council is now looking to fill two community member vacancies that currently exist.

The working group provides advice and recommendations around climate change, management of climate risk and implementation on targets relating to climate change and renewable energy in the Kyogle local government area (LGA).

Community members are appointed for two years but are able to nominate for further terms.

The working group has a wide brief, including monitoring the implementation of Council's 'Sustainable Councils and Communities Action Plan' and associated targets and its 'Review of Climate Change Assessment and Adaptation Initiatives' report – both reports can be found on the Climate Change and Energy page on Council's website

The working group assists Council to incorporate the latest knowledge of climate change impacts into planning policies and instruments, as well as providing a broader advocacy role with the aim of informing and educating the community.

The working group also identifies opportunities for external funding and joint projects that align with Council's adopted strategies, and monitors State and Federal Government climate change adaptation direction and advises Council on appropriate responses.

To view the Terms of Reference for the Climate Change Working Group go to the Climate Change and Energy page on Council's

website.

Expressions of interest to join the working group must be submitted in writing to Council's General Manager by close of business Friday, 24 September 2021 and should include the following details:

Your contact details

- Why you are nominating for the Climate Change Working Group, including what outcomes you hope to see achieved
- Details of any experience you have in connection with climate change issues or matters
- Details of any potential conflicts of interest in connection with your nomination
- Contact details for two referees
- Any other information in connection with your nomination that you think would be useful for Council to know when assessing your EOI.

EOIs will be assessed against the following selection criteria:

- Community delegates should preferably be nominated by a community group, consortium of community groups or a peak body preferably with wide membership or representation and must reside in the Kyogle LGA
  - Commerce and industry delegates should preferably be nominated by a peak body or a consortium of organisations preferably with a wide membership or representation and must reside in the Kyogle LGA
  - Scientific representatives must have a specialty in disciplines related to climate change and/or renewable energy, with preference given to those who reside in the Kyogle LGA.
- Nominees will be confirmed at a future meeting of Council.

EOIs should be emailed to [council@kyogle.nsw.gov.au](mailto:council@kyogle.nsw.gov.au) or sent to PO Box 11, Kyogle NSW 2474. Community members wanting further information about the working group or submitting an EOI, should contact Council's Senior Environmental Services Officers, Judy Faulks, on 02 6632 1611.



## VERY SPECIAL

### exhibition at The Roxy

Council's Roxy Gallery is once again opening its space up to the young creative minds of this region with the new exhibition of works by students attending COL-OURSS.

COLOURSS stands for Community Of Learners Of Upper Richmond Small Schools and comprises Afterlee, Barkers Vale, Collins Creek, Rukenvale, The Risk and Wian-garee Public Schools.

Students attending these schools have had regular opportunities dating back to 2002 to exhibit their art works in the Roxy Gallery.

In 2018, they explored the theme of metamorphosis and in this year's exhibition they investigate the design of food.

'Food, Different By Design' will be the students' first exhibition in the new gallery space and will be on show until 29 August.

This is a creative look at the things we eat and how the design of food engages our creative thoughts. Young people approach making art with wonderful freeness



and spontaneity and their works encourage viewers to see things from another perspective.

Due to the current health regulations, this exhibition will not be holding an official opening. The Roxy Gallery requires all



visitors to QR register on entry and while in the gallery wear a mask and maintain social distancing.

The volunteers are happy to assist people if needed.

## LIBRARY NEWS

*Due to the changing COVID-19 restrictions, Kyogle library is running a reduced list of regular programs.*

*Library patrons are advised to check the Richmond Upper Clarence Regional Library website for the latest details.*

### Jigsaws

Jigsaws are now available to borrow from Kyogle library. Drop-in and check out the colourful collection.

### Seed library

Take advantage of the great gardening weather and plant some seeds. You can obtain free seeds from the Seed library, with new varieties now available.

The library also is accepting seed library donations to further grow the seed library.

### Read, Rhyme and Romp

Read, Rhyme and Romp story time session at Kyogle library is for mums and bubs aged from 0-3 years. Pre-school

aged siblings welcome.

Sessions are held every Friday morning during school term from 10.30-11am.

### Playdough Play Time

Playdough Play Time is held at Kyogle library on the third Thursday of every month during school term.

It is open to preschool-aged children with a carer and runs from 10.30-11am.

The next scheduled playdough playdate is Thursday 19 August 2021.

### Lego Club

Kyogle library hosts a Lego Club for school-aged children on the fourth Thursday of every month during school term.

Lego Club runs from 3.30-4.30pm and is next scheduled to meet on 26 August 2021.

### Book discussion group

The monthly Kyogle Library Book Discussion Group meets on the third Tuesday of the month from 10.30am.

Members are having great fun getting together again Covid style while discuss-

ing their latest reads at Kyogle library. BYO a coffee/drink if you wish.

### Library delivery service

A free fortnightly home library service is available through Kyogle library.

Are you or a family member, friend or neighbour needing assistance to get out and about to the library?

If so, the library is happy to arrange a free fortnightly delivery service of library items to residences within the Kyogle township.

Contact Kyogle library staff on 6632 1134 for further details.

### JP services

Need a Justice of the Peace (JP)?

JP services are available at Kyogle library. However, you are advised to phone ahead on 6632 1134 to check on staff availability.

*\*To assist with new COVID-19 regulations, please phone Kyogle library on 6632 1134 for further details about all of the above programs.*



## Council prioritises POTHOLE

Council has hired a second pothole patching machine to address the increased number of potholes in the road network.

The new machine will focus on local Council roads while the original jetpatcher concentrates on maintenance of Bruxner Highway and Summerland Way in line with Council's Transport for New South Wales contracts.

The upgrade project on Bruxner Highway near Rogers Road, is continuing on schedule.

Works include culvert replacement, construction of new drainage infrastructure as well as new pavement on a 1.5km section of the highway.

Improvements continue on Afterlee Road with the rehabilitation of 11.25km of road between Ettrick Road and Brown Knob Road due to be complete

within the next few months.

In July, grading was carried out at Paddys Flat, with the crew then moving on to Yabba and then Deep Creek. The other grading crew has been occupied in the Dyraaba and Sextonville areas before moving on to the Afterlee catchment.

Council's bridge replacement program is progressing as planned with council bridge crews engaged in bridge replacement projects on Lees Road, Old Lawrence Road, and Sandy Creek Road while contractor Ozwide Bridge Rail and Civil continues on schedule with the replacement of Cedar Point Bridge on Edenville Road.

The last of the geotechnical investigations for the Fixing Country Bridges program was carried out in July and a bridge on Connells Road and another on Old Dyraaba Road were replaced with a piped culvert.

A bridge on Yongurra Road will be replaced with pipes in



August 2021 as will two bridges on Station Road.

In July, Council staff replaced a leaking elbow in the water main that services Gold Course Estate in Kyogle and started work on a new water main in Geneva.

Sinclair Street in Old Bonalbo has been closed since 15 July 2021 while a new carpark is constructed at the recreation reserve. Expected to be com-

plete in early August 2021, the works include installation of stormwater drainage, construction of a retaining wall, asphalt sealing, and linemarking.

In Kyogle, Gastons Lane has been resurfaced, along with a section of the southern end of Boorabee Street, *pictured above*, and the footpath along Summerland Way between Riverbend Close and George Street has been improved.

## EVENT Calendar

### Farmers Market

The Kyogle Farmers Market is held on Saturday mornings in Stratheden Street, Kyogle (between the Summerland Way and the library).

To book a stall phone Robert on 0407 506 548 or Anne on 6632 1851.

### Kyogle Museum

The Kyogle Museum is a great place to learn more about the history of the area.

Located at 19

Bloore, Kyogle, the museum has many photographs and historical items on display.

It is a great place to come for a browse, or to undertake some research on your own family history.

The museum is open from 10am-2pm on Thursdays and from 9am-1pm on Saturdays.

To contact the museum, phone 6632 3041, email khs.group1972@gmail.com or check out the museum's Facebook page facebook.com/kyoglemuseum.

## Council grant applications HAVE OPENED

Applications for grants under Kyogle Council's Community Assistance Policy have now opened.

The policy provides one-off grants of up to \$1,000 for organisations, \$500 for individuals. Grants of up to \$5,000 for projects with matched funding are also available.

Applications close at 4pm on Tuesday

31 August, 2021.

You can apply directly through this online link <https://www.kyogle.nsw.gov.au/forms-applications/online-forms-and-applications/application-for-financial-assistance/>

You can find the guidelines and a downloadable application form through this link <https://www.kyogle.nsw.gov.au/recreation-community/community-support/apply-for-financial-assistance/>

## LANDCARE TO hold field days, workshops

Are you a local landholder interested in landscape regeneration, grazing, soils and pastures?

Border Ranges Richmond Valley Landcare Network (BRRVLN) will be holding field days, workshops and paddock walks about healthy soils, planned grazing, dung beetles, landscape rehydration and other

related landscape and soils topics over the next two years.

These workshops will be held in the Upper Richmond River catchment area around Kyogle. Some of these topics may also be useful for horticulture and orchard managers.

To be placed on an email list to hear about when these activities are planned, please send an email to [sustainable.ag@brrvln.org.au](mailto:sustainable.ag@brrvln.org.au) or a text to 0490 008 067.

# FERAL DEER ON the rise on Northern Rivers

Kyogle Council has joined forces with Lismore and Tweed Councils and the Tweed and Border Ranges-Richmond Valley Landcare groups to launch 'The Northern Rivers is on Feral Deer Alert' program.

This community awareness campaign aims to prevent feral deer numbers growing out of control in the region, before it's too late.

The campaign asks the whole Northern Rivers community to stay on Feral Deer Alert, while they are driving, bush walking or managing their property, and to report feral deer sightings.

Tweed Shire Council's Feral Deer Management Officer, Rachel Hughes, said feral deer are becoming one of Australia's worst pest animals, with their populations booming in many parts of Australia.

"There are six species of introduced feral deer in Australia, and they are all causing significant and widespread problems," Ms Hughes said.

"When you first see a deer in the landscape, it can be a novelty at first, but feral deer breed quickly and become very difficult to manage as their populations grow.

"In regions not far from the Northern Rivers, feral deer are causing collisions on roads, reducing the ability of farmers to earn a living and causing native ecosystems to collapse.

"We have an opportunity to prevent this happening in the Northern Rivers, but we need to act now."

A series of community workshops were also held in July to teach people how to identify and record feral deer and how to control them on their property.

The workshops were held at Tyalgum, Murwillumbah, The Risk, and Fernside.

"The Northern Rivers is one of the last areas in New South Wales where feral deer populations haven't become established, but they are starting to be seen more frequently," Ms Hughes said.



"We're asking our communities to help us prevent feral deer getting out of control by understanding the impacts of feral deer, learning how to identify feral deer species, and reporting all sightings of feral deer as soon as possible using Feral Scan," Ms Hughes said.

The Feral Deer Alert campaign has been funded by the Australian Government's Communities Combating Pest and Weed Impacts During Drought program

Report all sightings of feral deer to: [www.feralscan.org.au/deerscan](http://www.feralscan.org.au/deerscan) or phone Local Land Services on 1300 795 299. For more information go to: [www.feraldeeralert.com.au](http://www.feraldeeralert.com.au).

## Council contact and info

### Council MEETINGS

The next Ordinary Council meeting will be held on Monday 9 August 2021 at 5pm. Ordinary meetings are held on the second Monday of every month except January and June. Meetings start at 5pm and are held at the Kyogle Council Chambers, 1 Stratheden Street, Kyogle. The first item of general business is Public Forum, which provides an opportunity for the public to speak to Council on items of business to be considered at the meeting. To request to speak at the Public Forum, you should email [council@kyogle.nsw.gov.au](mailto:council@kyogle.nsw.gov.au) or phone 6632 1611 by midday on the Friday preceding the meeting.

### REGIONAL ROADS INFORMATION

[www.myroadinfo.com.au](http://www.myroadinfo.com.au)

### RECYCLING FACILITIES

All Council waste facilities have recycling capabilities (if separated) and can recover oil, paper, cardboard, steel, aluminium, glass, and plastic at no charge.

#### The waste facility hours of operation are:

**Kyogle: 7.30am-12pm Monday to Friday**

**9am-4pm Saturday & Sunday**

**Woodenbong: Tuesday & Saturday 9am-4pm**

**Bonalbo: Wednesday & Saturday 9am-4pm**

**Mallanganee: Thursday & Sunday 9am-4pm**

*\* All Council waste facilities are closed on public holidays*



#### A WARD

**Cr Kylie Thomas**

0428 919 496

[crkylie.thomas@kyogle.nsw.gov.au](mailto:crkylie.thomas@kyogle.nsw.gov.au)

**Cr Hayden Doolan**

0402 097 185

[crhayden.doolan@kyogle.nsw.gov.au](mailto:crhayden.doolan@kyogle.nsw.gov.au)

**Cr Janet Wilson**

0419 600 848

[crjanet.wilson@kyogle.nsw.gov.au](mailto:crjanet.wilson@kyogle.nsw.gov.au)

#### B WARD

**Cr John Burley (Deputy Mayor)**

6632 1436 or 0437 252 376

[crjohn.burley@kyogle.nsw.gov.au](mailto:crjohn.burley@kyogle.nsw.gov.au)

**Cr Maggie May**

0499 551 714

[maggie.may@kyogle.nsw.gov.au](mailto:maggie.may@kyogle.nsw.gov.au)

**Cr Robert Dwyer**

6632 3352

[crbob.dwyer@kyogle.nsw.gov.au](mailto:crbob.dwyer@kyogle.nsw.gov.au)

#### C WARD

**Cr Danielle Mulholland (Mayor)**

0438 931 425

[crdanielle.mulholland@kyogle.nsw.gov.au](mailto:crdanielle.mulholland@kyogle.nsw.gov.au)

**Cr Lindsay Passfield**

6635 1429

[crindsay.passfield@kyogle.nsw.gov.au](mailto:crindsay.passfield@kyogle.nsw.gov.au)

**Cr Earle Grundy**

6665 3290

[crearle.grundy@kyogle.nsw.gov.au](mailto:crearle.grundy@kyogle.nsw.gov.au)

PO BOX 11, 1 Stratheden Street, Kyogle, NSW, 2474

Telephone: 02 6632 1611, After hours emergency: 02 6626 6800

Facsimile: 02 6632 2228, Email: [council@kyogle.nsw.gov.au](mailto:council@kyogle.nsw.gov.au)

Website: [www.kyogle.nsw.gov.au](http://www.kyogle.nsw.gov.au)

Facebook: [www.facebook.com/KyogleCouncil](https://www.facebook.com/KyogleCouncil)

**KYOGLE COUNCIL HOURS 8.30AM-4PM  
MONDAY TO FRIDAY**