

LEGEND

- - - Reserve boundaries (extent)
- - -> Existing vehicular movements/access
- ~ ~ ~ Existing drainage corridor
- Existing site signage

Main site entry and vehicle access

Heavy vehicle entry

Site signage

Water tanks (x3)

Storage shed

Pavilion / hall

x2 redundant tennis court slabs

Canteen

Main gate with 'Wiangaree Rodeo' signage

Storage shed

Main gates to Arena

Perimeter fencing (type varies)

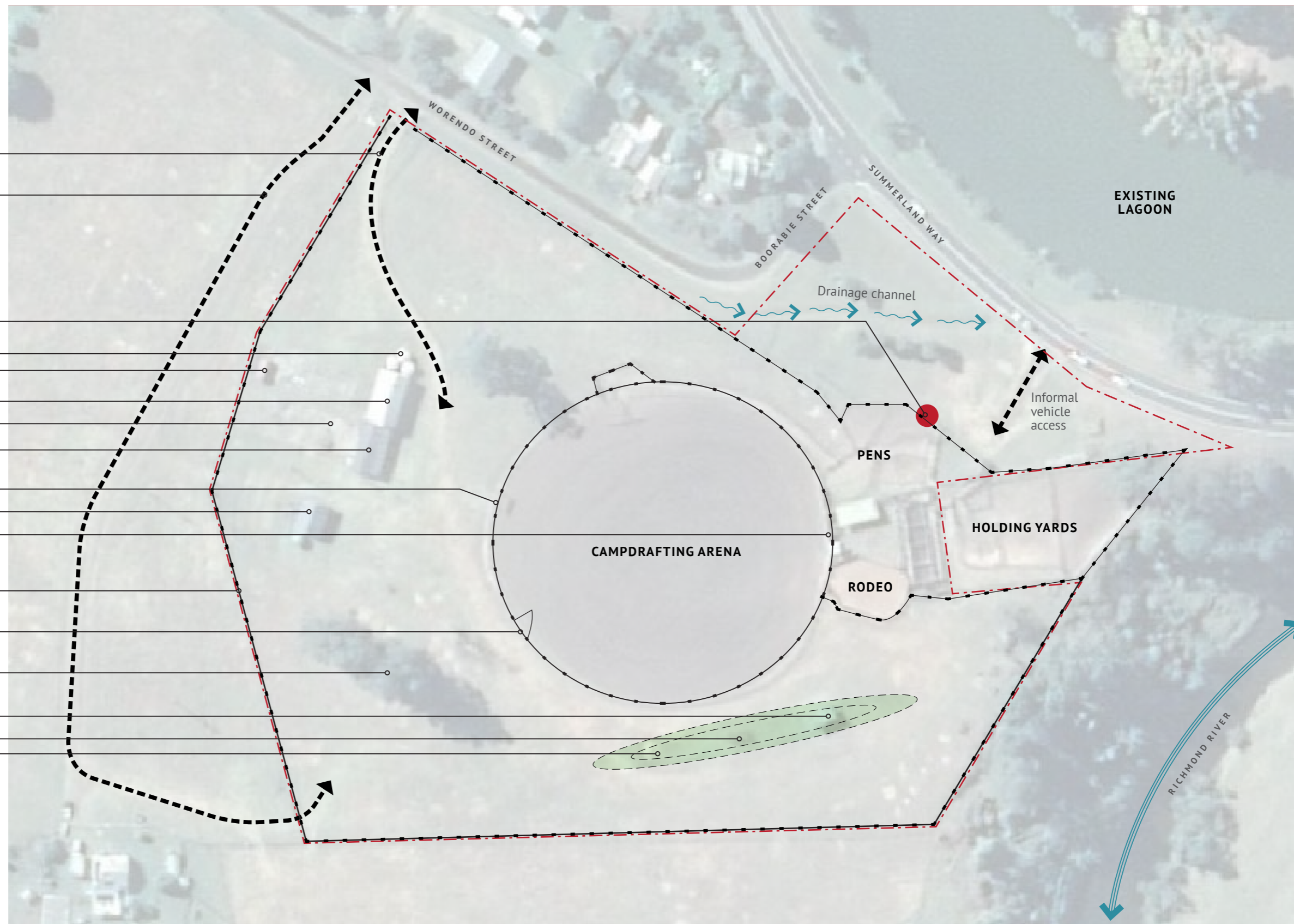
Ambulance access gate to Arena

Significant Eucalyptus trees and Hoop Pine tree

Covered bar area and canteen

Open-air spectator stands

Bund / mound



SUPPORTING MASTER PLAN

WIANGAREE RODEO GROUNDS

EXISTING CONDITIONS



Drawing Details

Site name: Wiangaree Rodeo Grounds

Scale: 1:500 at A3

Date: 22 July 2020

Sheet: 1 of 2



LEGEND

- - - Reserve boundaries (extent)
- ~> Existing drainage corridor
- - -> Proposed vehicular movements/access*
- Proposed ticket box / entry check point
- - -> Potential public 'River Walk' trail*
- Potential pedestrian bridge link to cultural heritage site*
- Proposed building (as noted)
- Spectator area
- Camping area
- Competitor area
- Car parking
- Heavy vehicle loading zone
- Restricted access
- New Reserve entry statements
- - - New perimeter fencing

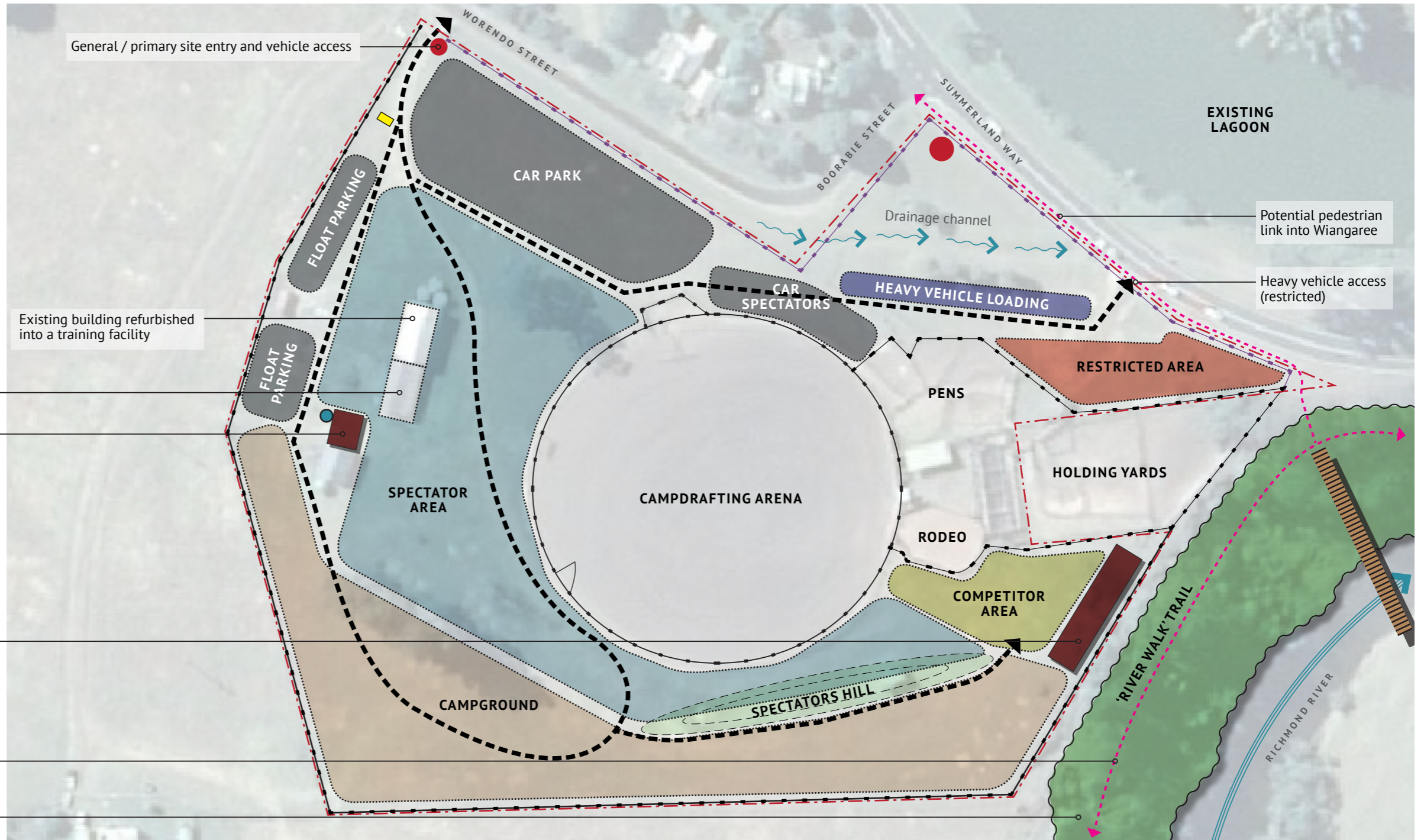
Shared use of existing kitchen to service Committee kitchen needs

New public amenities block (with rainwater tank) to service campers and patrons

New Day Stables (covered)

Potential 'River Walk' trail to link Wiangaree to Kyogle as part of a wider shared use connection (i.e. walking and cycling path)

Riparian zone rehabilitation and revegetation works (potential joint venture with Landcare)



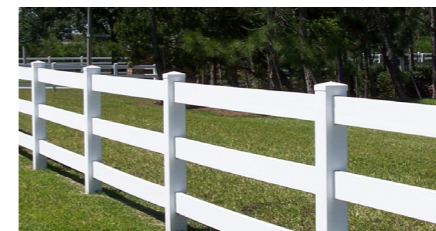
*River Walk' opportunity (combination of boardwalk and concrete path (photo by: Wauchope Chamber of Commerce and Industry Inc.)



*River Walk' example from Ipswich Riverheart Parklands (combination of boardwalk and concrete path (photo by: Caz & Craig Makepeace via www.discoveripswich.com.au)



Example of day stables (covered) from Quirindi Showgrounds



Example of new perimeter fencing to provide an aesthetic entry statement to the Rodeo Grounds (photo by: Global Industrial)



Opportunity for a future connection using a swinging pedestrian bridge (example from Annette McNamara brige in Quirindi)

* Subject to further investigation

SUPPORTING MASTER PLAN

WIANGAREE RODEO GROUNDS

FINAL VERSION | 2020



Drawing Details

Site name: Wiangaree Rodeo Grounds

Scale: 1:500 at A3

Date: 22 July 2020

Sheet: 2 of 2

