

LEGEND

- - - Reserve boundaries (extent)
- ← - - - → Existing vehicular movements
- - - ◆ - - - Existing pedestrian movements
- ~ ~ ~ Existing drainage corridor
- Existing rainwater tank
- Existing signage

Picnic shelter with BBQ and x2 tables

Rainwater tank (connected to shelter roof)

Playground (no shade cover)

Park signage and entry statement

Footpath to amenities

Public amenities

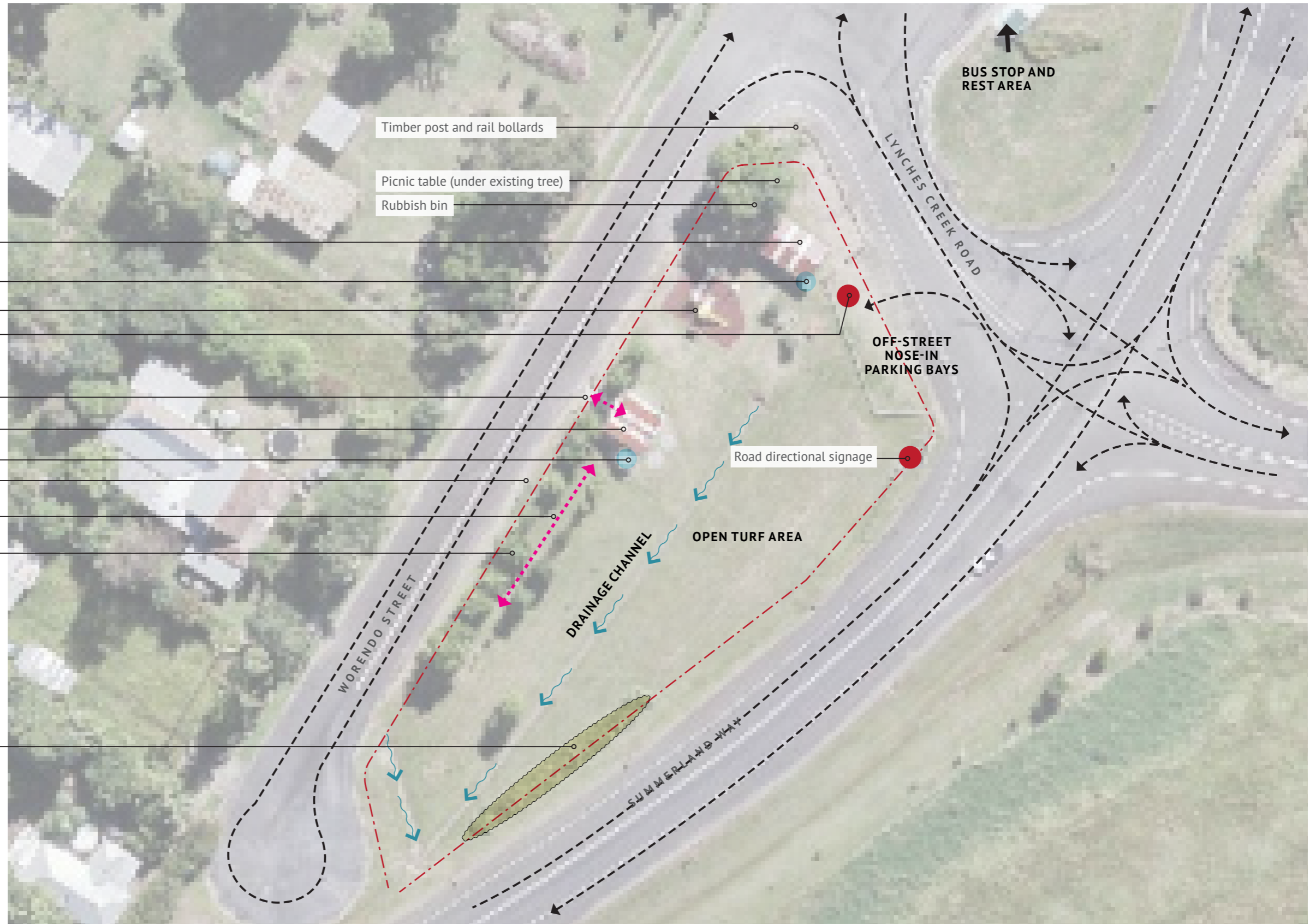
Rainwater tank (connected to shelter roof)

Informal parking (evidence of parallel car parking)

Informal turfed pathway

Formal double row arrangement of street trees and privacy screen planting

Buffer landscape strip



SUPPORTING MASTER PLAN

ABOODY PARK, WIANGAREE

EXISTING CONDITIONS



Drawing Details

Site name: Abody Park, Wiangaree

Scale: 1:500 at A3

Date: 16 July 2020

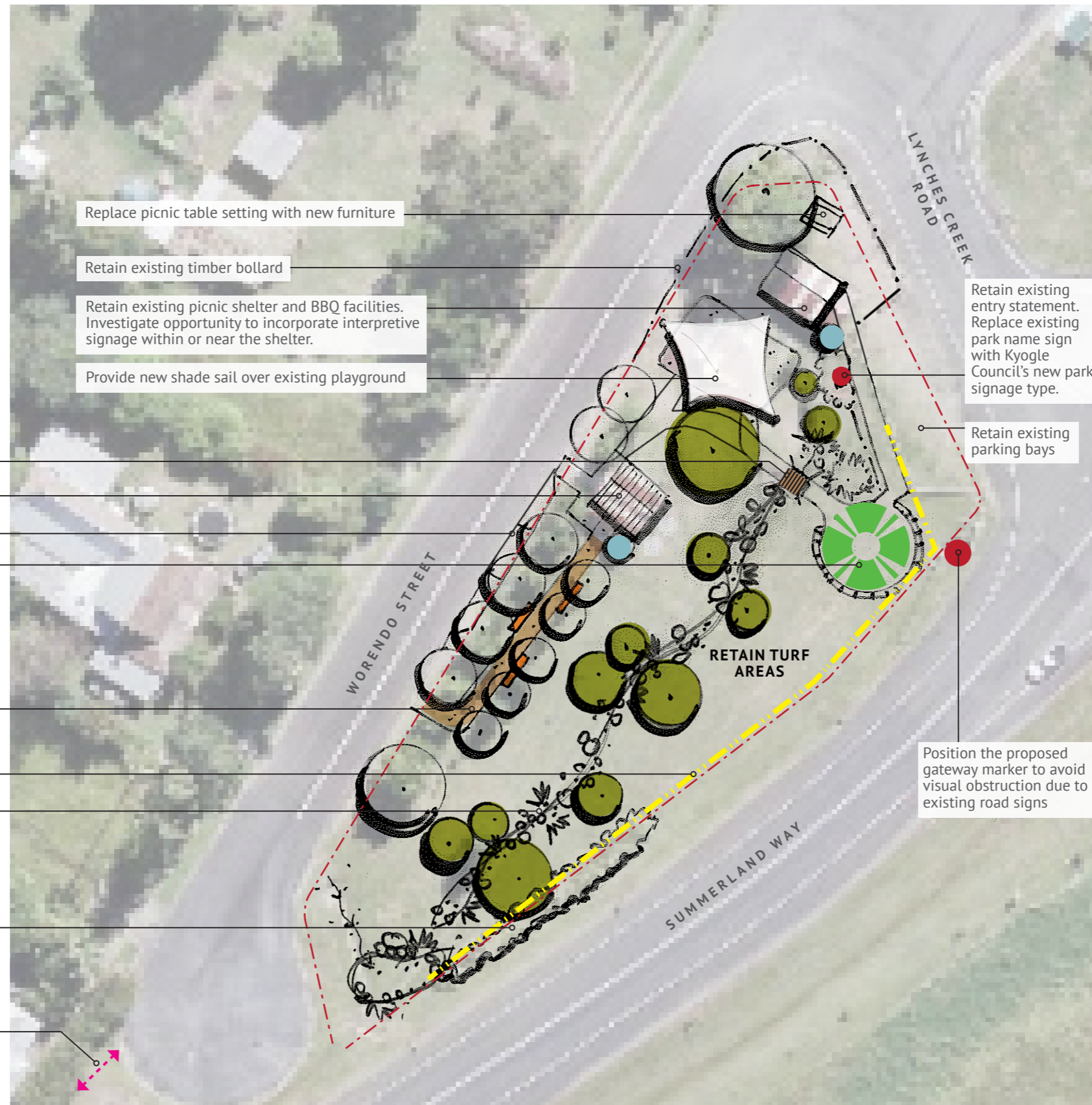
Sheet: 1 of 2



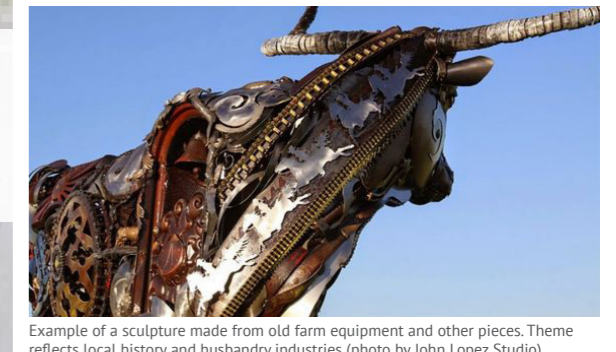
LEGEND

- - - Reserve boundaries (extent)
- ← - - → Existing vehicular movements/access
- ← - - → Existing pedestrian movements
- ← - - → Proposed pedestrian connection
- - - Proposed child safety fencing
- ~ ~ ~ Existing drainage corridor
- Existing rainwater tanks
- Existing signage
- Pause point seating
- New tree planting / landscaping

- Provide footbridge crossing over channel
- Retain existing public amenities
- Formalise parking bays along eastern verge of Worendo Street
- Provide a gateway marker and interpretive element to celebrate arrival into the Kyogle region and village of Wiangaree. Opportunities may include a commissioned public art sculpture, a new structure, or signage. Potential themes could reflect the "Gateway to the Rainforest" brand, local heritage (i.e. farming and dairying), Aboriginal history or nearby geological features (such as the Helmet).
- Provide granitic gravel path with bench seating beneath the existing double row of street trees and privacy screen planting. Position seats to take in views of The Helmet.
- Install new child safety fencing to roads edge
- Existing drainage channel to be retained and embellished to achieve a dry creekbed look (i.e. rock lined, sedges and tufted grasses with a spreading/rhizomatous habit that can tolerate peak flows and periods of being submerged) and new tree plantings (species to complement local landscape character)
- Retain existing buffer landscape strip
- Opportunity to provide a future pedestrian connection to an existing easement. The easement has potential to become a 'green link' through the centre of Wiangaree.



EXEMPLAR IMAGES



SUPPORTING MASTER PLAN

ABOODY PARK, WIANGAREE

FINAL VERSION | 2020



Drawing Details

Site name: Abody Park, Wiangaree

Scale: 1:500 at A3

Date: 22 July 2020

Sheet: 2 of 2

