



*Kyogle Council Mayor Cr Danielle Mulholland welcomed 10 new Australian citizens to the fold on Monday 4 November at one of the biggest Citizenship Ceremonies Council has ever hosted.*

### In this ISSUE

MAYOR'S  
MESSAGE  
- 2 -

BUSHFIRE  
ASSISTANCE  
- 3 -

DROUGHT  
ASSISTANCE  
- 4/5 -

WHAT'S ON  
AT THE  
ROXY  
- 6 -

LIBRARY  
NEWS  
- 7 -

COMMUNITY  
GROUP TO RUN  
TIP SHOP  
- 8 -

## BUSHFIRE Threatens Communities

At the time this newsletter was prepared, we had the Border Trail fire threatening communities from Woodenbong to Grevillia, with the potential to move to the east, west and south of these areas. Since this bush fire threat started, the community have been working together to support each other and those combating the fires. The achievements of these collective efforts in protecting lives and homes, once again highlights the strength and resilience of our community that sets our area apart from others.

Council and all other agencies are working closely together to support the efforts of the RFS and the local community in the work they are doing on the ground in the fire affected areas, with strong leadership from the NSW Police through the regional Emergency Operations Centre in Casino.

The current focus is on keeping every-

one safe as the fires continue to move through the area. These fires are expected to burn for some time, and there is a need to keep people informed of the situation as it continues to change, and to ensure they remain vigilant and alert.

Council has been assisting the RFS with provision of water trucks and graders, management of road closures, and assisting the other agencies and community groups with support where needed. Local contractors such as MJ Smith have also been heavily involved in assisting the RFS with efforts at the fire front, and community groups and volunteers have been assisting with a range of services including providing food and operating evacuation centres.

The fires we are seeing now are quite intense, due to high fuel loads in the National Parks and State Forests on the back of a prolonged period of drought. These types of fires were what members of our community had long expressed concern about, but hoped would never happen.

Council is raising these concerns again now to advocate for increased funding and resources to ensure that Forestry and National Parks have the capacity to better manage the fire risks associated with these public lands in the future, and in partnership with the local indigenous communities who have managed the country through the use of fire for thousands of years. This is a discussion that needs to be had after the immediate threat of these fires has past, to ensure that we don't end up with these conditions again in the future.

There will be a transition to recovery as the fire threat subsides, and Council will be there to ensure that the community is also well supported through the recovery process. On behalf of the whole community, we wish to express our sincere thanks to all those who have helped during this emergency, and to let those who have been directly affected that they have the support of the whole community.



## *from the Mayor ...*

Well as I write this, I know that most of us will be thinking of just one thing – the fires around us. Some have evacuated, some may have to in future and the flow on effects will continue for quite some time after this is all over. These are challenging and testing times for us all and this is where we will shine. It's times like these when the best comes out in people.

My heart goes out to all our fire fighters out there facing down a threat that most of us don't even want to consider. I think about all the volunteers selflessly giving their time and labour to help those most in need, I think about all the emergency services and support personnel behind the scenes coordinating efforts and working together to try to keep everyone safe and save as much property as possible. I think about those people and businesses willingly donating what they can to help out and all the CWA branches, the Red Cross and so many other agencies and organisations doing what they can to help. I say a heartfelt thank you to all of them.

We have challenging days ahead. There's not going to be an easy or quick fix. We're at the mercy of the weather. I know that everyone is feeling the stress and strain whether you're directly affected, about to be, have relatives who might

be or you're just feeling the uncertainty and fear that comes from an event of this nature. Stay strong, look after each other, be kind and tolerant of each other, talk about how you feel with those who support you. There will be an end to this. It won't go on forever although it might feel like it sometimes. We will get through this as we have other natural disasters and then we'll clean up, rebuild, recover and life will go on.

If anyone experiencing difficulties with Essential Energy as a result of the bush fires, please contact the Essential Energy operations team or alternatively, you can telephone their Customer Liaison Supervisor Brendon McEntee on (02) 6643 7736.

On news other than the fires, October was an incredibly busy month with three trips to Sydney to attend meetings with the Country Mayors Association, the Local Government NSW conference, a meeting with all the chairs of the Joint Organisations across NSW, a meeting of the Minister's Joint Organisation Advisory Committee, meetings with shadow Ministers and the list goes on. I try to keep everyone as informed as best I can but all the details would just be boring, I'm sure.

I've also had a number of meetings with locals over a range of issues and of course had a chance to catch up with our

local State and Federal representatives who do a great job representing our needs in Sydney and Canberra. You can rest assured that they get to chat with me on a regular basis.

On a bright note I also had the opportunity to conduct a citizenship ceremony at the newly redeveloped Roxy Gallery and it was an honour and pleasure to welcome new citizens to our community. It's one of the parts of the role that I find very rewarding.

You'll see that we've been rolling out some projects due to popular demand, including the Kyogle Tip Shop. This is a great result for the community and is consistent with Council's commitment to encouraging recycling and reuse of materials, preventing them from ending up in landfill. Kyogle Resource Innovation Collaborative (KRIC), which is a not for profit community group, was selected to run the Tip Shop and will be able to earn an income stream so they can deliver community programs.

There's great things coming next year so be ready for some surprises.

Well that's about it for this month. Stay safe and look after each other.

Until next time,

*Cr Danielle Mulholland*

## **AUSTRALIA DAY** award nominations open

Nominations for the Kyogle, Woodenbong and West of the Range Australia Day Awards are now open.

Members of the public are being asked to nominate the area's unsung heroes who deserve recognition for their community endeavours.

**Kyogle** has seven award categories – Citizen of the Year, Junior Citizen of the Year, Senior Sportsman of the Year, Junior Sportsman of the Year (under 18), Senior

Student of the Year (high school) and Junior Student of the Year (primary) and Senior Citizen of the year – and nominations will

close of 17 December 2019.

**Woodenbong** has six award categories - Citizen of the Year, Young Citizen, Sportsman, Community Organisation/Event, Business/Service and Environmental Citizen/Organisation of the Year - with nominations closing on 31 December 2019.

**West of the Range** has five award categories - Citizen of the Year, Young Citizen, Sportsman, Community Organisation/Event, and Business/Service - and nominations will close at 4pm on 14 December 2019.

For further details about the Australia Day Awards, including nomination forms go to Council's website at [www.kyogle.nsw.gov.au](http://www.kyogle.nsw.gov.au) or call 6632 1611.

Hard copies of all the award nomination forms also are available at Council's administration centre.

# BUSHFIRE Assistance

## Animal Welfare

Local Land Services is assisting with emergency fodder, stock water and assessment of animals impacted by the fire. Landholders are encouraged to call the Agriculture and Animal Hotline to request assistance and report any stock or infrastructure losses. Animal & Agriculture Hotline: 1800 814 647

## Your Welfare

Bush fires are distressing and you might feel things like sadness, frustration or anxiety, or have trouble sleeping or remembering things. This is a normal reaction to an abnormal event and is not a sign of weakness. Keep an eye on yourself and your family and friends. There is always someone available to listen. Free telephone support available 24 hours a day, seven days a week.

- Beyond Blue 1300 224 636
- Mental Health Line 1800 011 511
- Kids Helpline 1800 551 800
- Lifeline 13 11 14
- Mensline 1300 789 978

If you or someone you know is in immediate danger always call 000.

## Keep up to date

Check the bush fire situation : <http://www.rfs.nsw.gov.au>; listen to local ABC Radio; call the NSW RFS Bush fire Information Line on 1800 679 737 or monitor the NSW RFS Fires Near Me app. Check road closures : call the NSW RTA on 131 700 or check [www.rta.nsw.gov.au](http://www.rta.nsw.gov.au)

Check National Park closures : by visiting [www.npws.nsw.gov.au](http://www.npws.nsw.gov.au)

## How you can help

Look after your family and friends or donate cash to a local charity.

If you would like to offer further assistance call The Salvation Army on 13 72 58; Vinnies on 13 18 12 or The Red Cross on 1800 733 276

## Disaster Relief Grants

If you are not insured and have limited income, you may be eligible for a disaster relief grant. Please call Disaster Welfare on 1800 018 444.

## Disaster Recovery Payment

The Australian Government Disaster Recovery Payment has been activated for people severely affected by the NSW Bush Fires. This provides a one-off payment of \$1000 per adult and \$400 per child if your home has been destroyed or severely damaged – including smoke damage. Call 180 2266 to apply or visit:

[disasterassist.gov.au](http://disasterassist.gov.au)

## Disaster Recovery Allowance

The Disaster Recovery Allowance has been activated by the Australian Government for people affected by the NSW Bush Fires. This provides short term support payment to assist those whose income has been affected as a direct result of the bush fires. Call **180 2266** or visit [humanservices.gov.au](http://humanservices.gov.au)

## Replacing personal documents

Service NSW can help replace many of your personal documents free of charge if they were damaged or destroyed. This includes birth certificates, marriage certificates, licences and number plates. For assistance please visit your nearest NSW Service centre, or call 13 77 88

## Housing Assistance

Communities and Justice can assist by providing temporary accommodation for up to 28 nights while impacted residents look for longer-term arrangements. Communities and Justice can also provide financial assistance through an interest-free bond loan and a grant for advanced rent of two weeks. All fire affected residents are eligible for this assistance. Call Housing: 1800 422 322

## Domestic Water Assistance

If your potable water has been used by a fire fighting agency to fight the fire, you may be eligible to have it replaced. This assistance is for residential properties in rural areas. Call the Disaster Welfare Assistance Line on 1800 018 444 (Mon–Fri 8.30am–4.30pm) for more information.

## Festive season Council CLOSURES

Kyogle Council landfills and transfer stations will be closed for public holidays during the festive season.

The following facilities which would normally be open, will be closed on the following days:

- **Friday 20 December** - Kyogle landfill closed (Council Christmas party)
- **Wednesday 25 December** - Kyogle landfill and Bonalbo transfer station closed.
- **Thursday 26 December** - Kyogle land-

fill and Mallanganee transfer station closed

- **Wednesday 1 January 2020** - Kyogle landfill and Bonalbo transfer station closed

The Kyogle landfill will be open as normal on Saturday 21 December, Sunday 22 December, Monday 23 and Tuesday 24 December.

Meanwhile, Council's administration centre will be closed from midday Friday 20 December 2019 to Friday 3 January 2020 inclusive and will re-open at 8am Monday 6 January 2020. For emergencies during this time, please call Council's after hours number, 6626 6800.

## Training Centre to hold OPEN DAY

The Louisa Johnston Training Centre Committee are hosting an Open Day at 5 Sandilands Street, Bonalbo, on Wednesday 27<sup>th</sup> November from 11am, and all are welcome.

We will be celebrating over 50 years of supporting people with disabilities in our community and will share our exiting vision of the future, beginning with our recent upgrades.

Light refreshments will be available and please RSVP by 13<sup>th</sup> November to [LouisaJTC@gmail.com](mailto:LouisaJTC@gmail.com) or phone Fiona 0428 894450





# Drought assistance available from

All of the Kyogle Local Government Area is now classified as being in intense drought.

For comprehensive information on assistance available to manage the effects of the drought, people are urged to visit:

- the NSW Drought Hub at [www.dpi.nsw.gov.au/climate-and-emergencies/droughthub](http://www.dpi.nsw.gov.au/climate-and-emergencies/droughthub);
- the Drought and Rural Support resource on Federal Government's Department of Agriculture page at <http://www.agriculture.gov.au/ag-farm-food/drought>
- the national Farmhub at <https://farmhub.org.au/>
- Council's website at [www.kyogle.nsw.gov.au/wp-content/uploads/2019/11/drought-assistance-information-pack](http://www.kyogle.nsw.gov.au/wp-content/uploads/2019/11/drought-assistance-information-pack)

The following summary provides details on key State and Federal Government drought assistance measures available to eligible applicants.

## NSW Government Assistance

### Loans

Drought Assistance Fund - \$50,000 is available for interest free loans to transport stock, fodder and water, genetic banking of breeding herds and installing farm and water infrastructure. The seven-year loan term requires no repayments in the first two years and attracts no interest charges.

Farm Innovation Fund - a loan scheme for capital works up to a value of \$1,000,000 for infrastructure works (e.g. sheds, silos, water tanks) to build resilience in dry times and improve on-farm efficiency.

### Subsidies

- Animal Welfare Transport Subsidy- 50% of eligible costs for the permanent transport of stock off a farm facing financial hardship and where livestock are at fat score 2 or below (dairy cattle 3 or below), to a maximum of \$20,000 per financial year.
- Donated Fodder Transport- 100% of



cost of transporting donated fodder when transport providers are acting in conjunction with community groups and taking donated fodder to drought-affected properties within NSW. Maximum of \$5 per km and up to 1500 km.

- Drought Transport Subsidy - up to \$40,000 per eligible farm business from 1 July 2019 to 30 June 2020, for the cost of transporting fodder, water to a property for stock or domestic use, stock to and from agistment, and stock to sale or slaughter. For applications received from 1 July 2019, the subsidy also includes transporting farm chemicals, fertiliser and seed to farms, and there is no longer a cap on distance per journey. The subsidy covers up to 50% of the full cost of freight, up to a maximum of \$5 per kilometre.
- Farm Business Skills Professional Development Program - up to 50% of eligible costs for an approved course or activity, with a maximum reimbursement of \$5,000 per farmer and \$9,000 per farm business.

### Waivers

- Bee Site Permit
- Agricultural Vehicle Registration
- Farm Innovation Fund Interest Charges
- NSW Local Land Services Rates
- Water Licences
- Wild Dog Fence Charges

## Support Services and Tools

**Assistance Near You** - search an interactive map on Drought Hub to find someone you can meet in person to help with lodging application forms, internet access and scanning invoices.

**Drought Feed Calculator** - free mobile app helping farmers determine feeding requirements.

**Farm Tracker app** - free mobile app helping farmers to keep detailed records of farm conditions.

**Local Land Services** - technical experts providing farmers with on the ground support and advice on agricultural production, biosecurity, animal nutrition, pasture management and livestock health.

**NSW Rural Assistance Authority** - the RAA administers a wide range of financial assistance measures to the rural sector, both state and federally funded.

**Rural Adversity Mental Health Program (RAMHP)** - state-wide program to help link people in regional and remote areas of NSW with mental health support.

**Rural Financial Counselling Service** - helping farmers who are dealing with, or are at risk of, financial hardship. Rural financial counsellors can help identify options, develop action plans and access the Farm Household Allowance (FHA).

**Rural Resilience Program** - the team is

Continued next page





# State and Federal governments

## From previous page

dedicated to building the personal and business resilience of farming communities and strengthening networks and skills.

**Young Farmer Business Program-** supporting young farmers to develop skills, ideas and resilience through a range of products and services.

For contact details, local events and links to the above support services, visit Drought Hub.

## Drought Management Information

NSW Department of Primary Industry (DPI) coordinates the NSW Government's response to drought. Visit Drought Hub to view and download DPI's wide range of fact sheets, information, tips and links to help farmers make sound decisions and locate support services when and where they are needed:

**Managing During Drought-** download a copy of the "Managing and Preparing for Drought" booklet, which is a comprehensive guide for farmers, before and during periods of drought.

**Water during drought-** an overview of water resources in NSW, and where links to the most up to date information.

**Wellbeing-** links to services across NSW to build resilience and support farmers, their families and rural communities.

**State Seasonal Update-** released monthly, this comprehensive report helps farmers to better respond to drought.

**NSW Drought Map-** the Combined Drought Indicator provides farmers with a detailed and interactive report on conditions in their local area.

**Animal Welfare During Drought-** detailed resources to support sound decision making regarding animals during dry times.

## Charity Coordination

The NSW Government appointed GIVIT as the official charity partner to manage offers of drought assistance. GIVIT works with local charities, schools and commu-

nity service providers to match donations with the people who need them the most. For more information, visit <http://www.givit.org.au>.

## Federal Government Assistance

### Household assistance

The Government has made available a Farm Household Allowance (FHA) which is a payment for farming families experiencing financial hardship. Included in this allowance is:

- A fortnightly payment
- Allowances to help farmers with expenses such as rent, phone and medicine.
- A financial assessment of the business (worth up to \$1,500).
- A health care card to help reduce health care costs.
- Funding to develop skills, access training and pay for professional advice (worth up to \$4000).
- Fortnightly payments will vary depending on individual situations, and are based on social security allowances.

Eligibility basics:

- ◇ A farmer who spends a major part of their time and capital working on the farm.
- ◇ The partner of a farmer who spends a major part of their time and capital working on the farm.
- ◇ Meets the income and assets test limits.
- ◇ Meets mutual obligation requirements.

◇ On top of the FHA, farming families also have access to a Rural Financial Counsellor which can be accessed if the farmer is experience, or at risk of, financial hardship.

◇ Open to farmers, fishing enterprises, forest growers and harvesters, and related small business owners.

### Drought Communities Support Initiative

The Drought Community Support Initiative provides immediate assistance, through selected charity organisations, to eligible farmers, farm workers and farm suppliers/contractors who are facing hardship arising from the impact of drought in eligible Local Government Areas.

Immediate financial support may constitute up to \$3,000 cash per eligible household.

### Loans

**Farm Investment loans** – up to \$2 million – 3.11% variable interest rate - first 5 years interest only repayments, then principal and interest for remainder of the 10 year term. After 10 years, you can refinance any remaining balance with a commercial lender.

**Drought loans** – up to \$2 million - 3.11% variable interest rate - first 5 years interest only repayments, then principal and interest for remainder of the 10 year term. After 10 years, farmers can refinance any remaining balance with a commercial lender.

For further information, go to <https://www.ric.gov.au/farmers>







# JOIN COUNCIL'S Climate Change Working Group

Council is calling for expressions of interest from community members keen to be part of its Climate Change Working Group.

The working group will provide advice and recommendations around climate change, management of climate risk and implementation on targets relating to climate change and renewable energy in the Kyogle local government area (LGA).

It will be made up of three councillors, relevant council staff and six community members from groups concerned with: science, commerce and industry, Indigenous representation, community and youth.

Community members will be appointed for two years but would be able to nominate for further terms.

The terms of reference for the Climate Change Working Group are:

- To monitor the implementation of;
- ◇ The Sustainable Councils and Communities Action Plan for Kyogle Council and associated targets adopted in June 2019
  - (a) *That 25% of Council's electricity demand is met through on-site solar energy generation by 2025*

(b) *That 50% of Council's electricity demand is sourced from renewables by 2025*

(c) *That 100% of Council's electricity demand is sourced from renewables by 2030*

*Council also encourages and supports the use of renewable energy by the community, particularly in new developments.*

- ◇ The Climate Change Adaptation Risk Assessment report adopted in August 2019.
  - To provide advice in accordance to the principals of Ecologically Sustainable Development and relevant Federal, State and Local Government Policy and Legislation.
  - To provide a broader advocacy role that seeks to inform and educate other parts of the community.
  - To assist Council incorporate the latest knowledge of climate change impacts into planning policies and instruments.
  - To foster opportunities for external funding and joint projects that align with Councils adopted strategies and targets.
  - Monitor State and Federal Government climate change adaptation direction and advise Council on appropriate responses.
- Expressions of interest must be submitted in

writing to the General Manager by close of business January 24, 2020.

EIOs will be assessed against the following selection criteria:

- Community delegates should preferably be nominated by a community group, consortium of community groups or a peak body preferably with wide membership or representation and must reside in the Kyogle Local Government Area
  - Commerce and industry delegates should preferably be nominated by a peak body or a consortium of organisations preferably with a wide membership or representation and must reside in the Kyogle Local Government Area.
  - Scientific representatives must have a speciality in disciplines related to climate change and or renewable energy, with preference given to those who reside in the Kyogle Local Government Area.
- EIOs should be emailed to [council@kyogle.nsw.gov.au](mailto:council@kyogle.nsw.gov.au) or sent to PO Box 11, Kyogle, NSW 2474.

For further information about the working group or submitting an expression of interest, please contact Council's Strategic Initiatives Coordinator Suzie Coulston on 02 6632 1611.

# DASHER'S HOPE

The end of year, beginning of new year exhibition at the Roxy Gallery takes on the title of 'Dasher's Hope' and will be on exhibition from December 18 – January 26 2020.

This exhibition is an opportunity for local and regional artists to exhibit in a group exhibition that is about offering. Offering up ideas of for gift purchasing and providing artists opportunity to get their works out into the public domain.

The concept of this exhibition has been a tradition repeated by the Roxy Gallery over its 20 year history. By opening up the gallery to all artists, practicing artists and those who just casually engage in making art, this type of exhibition showcases what is happening in the creative world of our region.

The official opening for this exhibition will be on Wednesday December 18 from 6 – 8 pm and the all interested members of the public are welcome to come along to this social event and mingle with the creators.

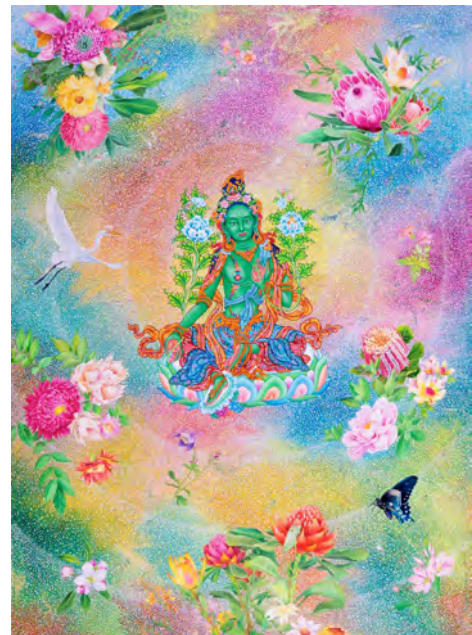
There is opportunity for any purchases of works to be removed and ready for Christmas stockings. So keep this in mind if you are looking for that something special and original during Christmas gifting time and support local artists with their creative development through the purchase of their works.

As Dasher leads the sled into a New Year we all hope for a change to the current situations that have been effecting so many.

The Director of the Roxy Gallery and the staff of Kyogle Council would like to extend many thanks to all the people who assist in supporting the gallery.

To the many volunteers that happily give their time opening up this amazing facility for the general public, both local and visitors to our region to engage in THANK YOU all for your commitment to the arts in our community.

May our festive season be embraced with a change, a change in weather.



ABOVE: Datora Karma Phunstock  
BELOW: Jenny Kitchener – Floral Notes Duet



## **LIBRARY** news

### **Rhythm, Rhyme & Romp**

A Mums (carers) and Bubs group meets every Friday morning during school term from 10-10.30am for story time at the Kyogle library.

It is open to new borns to three-year-olds and their carers.

Bookings are not necessary. Just come along on the day and enjoy story time in the company of other carers and their youngster.

### **Borrow a cake tin**

You can now borrow cake tins from the library, with the Richmond Upper Clarence Regional Library recently obtaining a new collection of tins for people to borrow.

For further details, speak to library staff or call 6632 1134.

And soon, patrons will also be able to borrow knitting needles and crochet hooks from the library. Further details to be advised.

### **Lids for kids**

Kyogle library is now a collection point for plastic screw top drink container lids and bread tags that are used by two organisations to provide wheelchairs and prosthetic hands for disadvantaged children.

You can support the two organisations by collecting bread tags, and lids from milk, juice, water and soft drink bottles and dropping them into the collection box at the library.

### **Book discussion group**

Kyogle Library Book Discussion Group meets at the library on the third Tuesday of the month at 10am for 10.30-11.30am.

There are no set books for discussion - members discuss any book they have enjoyed reading. All welcome.

### **Adult colouring in**

Adult colouring-in sessions are currently held at the library twice a month - on the second Friday and fourth Wednesday of each month at 10am for 10.30-11.30am.

### **Parents 'n' Kids Club**

Kyogle Library will host the next meetings of the Saturday Parents 'n' Kids Club on 30 November and 14 December from 10.30-11.30am.

### **Pizza & Pages**

Pizza and Pages is held at the Kyogle library on the third Thursday every month between 3.30-4.30pm during school terms, with the next ones planned for 28 November and 5 December.

The event is for tweens and teens (10-18 year olds) and there will be fun activities, giveaways and pizza.

No bookings required, just come along and join in the fun.

## **POOLS WILL** open on public holidays

Council's three public swimming pools at Kyogle, Woodenbong and Bonalbo will be closed on Christmas day.

Normal public holiday opening hours will be in place for the other public holidays.

Public holiday operating hours are: Kyogle, 10am-6pm; Bonalbo, 2-6pm; Woodenbong, 2-6pm.

Council's inflatable activity centre will tour the three pools over the summer holiday period.

It will be at:

#### **Kyogle pool on Saturday 28 December**

2019 from 11am-12pm (sharp) and from 1-3pm (sharp - no exceptions).

#### **Woodenbong pool on Saturday 4 January**

2020 from 12-3pm (sharp).

#### **Bonalbo pool on Saturday 11 January**

2020 from 12-3pm (sharp).

#### **Kyogle pool on Sunday 26 January 2020**

from 1-4pm (sharp).



## **Community** **Calendar**

### **Music and market stalls**

If the skirl of the pipes and the beat of the drum gets your heart racing and feet tapping, then be in Stratheden Street, Kyogle on Saturday 14 December between 9.30am and 11.30am and enjoy music of the Lismore Pipe Band.

Kyogle Tidy Towns members will be offering those in attendance a free tasting of traditional Christmas pudding and custard.

Come along and spend the morning at the Farmers Market, buy your fruit, veggies and Christmas treats and sit back and enjoy the music.

### **Carols by Candlelight**

Kyogle Lions Club will host the Community Carols By Candlelight on Sunday 15 December at the Kyogle Amphitheatre starting at 5.30-6pm.

There will be carols, entertainment and a visit by Santa Clause.

Bring a chair or a blanket and enjoy this wonderful community event.

Food and refreshments will be available.

### **Kyogle Bazaar**

Kyogle Bazaar is getting ready for an ethical local and handmade Christmas.

It is time to come meet the maker and find how to personalise an order for that special hard to buy for person.

You can feel comfortable knowing your buying from a local, who will spend local too. On top of that your goods will be made with the least possible waste and many stalls can show you items made from salvaged materials.

Come down and see fabulous duet Sticky Rock playing in the stage area. Bring your plate and cup to eat from the community barbecue, Shimlas Curry House, Hannah's cupcakes, an ice cream from sensational Phoenix fruit products.

Support local. Enjoy and be proud of local.

### **Bonalbo market**

A market is held at the Bonalbo Community hall and grounds on the first Sunday of every month from 10am to 1pm.

Tables cost \$5 - just come along at 9.30am on the day.



# TIP SHOP OPEN

## and ready to do business

The Kyogle Tip Shop's grand re-opening will be held on Saturday 7 December 2019, from 9am – 3pm.

Tip shop operator, the Kyogle Resource Innovation Collective (KRIC), has invited the community to come along, see what the new facility has on offer, and pick up a bargain or two.

Goods and materials available for purchase through the Tip Shop include:

- whitegoods and household appliances
- building, construction and renovating materials
- tools and gardening equipment
- toys and sporting equipment
- home decoration items
- second-hand furniture
- car and bike parts and accessories.

"The public can expect to pick up quality items at very affordable prices. Many items are in very good condition with some brand new in their original packaging," Mr Gibson said.

All profits from the sale of items at the Tip Shop will go to support further projects, activities and events aimed at reducing waste, increasing recycling and improving environmental education within the community.

Kyogle Council Mayor Danielle Mulholland said she was thrilled to see the Tip Shop open for business again.

"This project is a great example of Council and the community working together to create an innovative new approach to service delivery," she said.

"It is a great result for the community and is consistent with Council's commitment to support social enterprise and encourage recycling and reuse of materials, preventing them from ending up in landfill."

Initially, the Tip Shop will be open to the public from 9am – 3pm every Saturday and Sunday. Members of the public may also donate goods and materials to the Tip Shop during opening hours.

The Tip Shop is located next to the Container Deposit Scheme shed at the Kyogle Landfill Facility on Runnymede Road, Kyogle.



## Council contact and info

### Council MEETINGS

The next Ordinary Council meeting will be held on Monday 9 December at 5pm. Ordinary meetings are held on the second Monday of every month except January. Meetings start at 5pm and are held at the Kyogle Council Chambers, 1 Stratheden Street, Kyogle. The first item of general business is Public Forum, which provides an opportunity for the public to speak to Council on items of business to be considered at the meeting. To request the opportunity to speak at Public Forum, you should email ([council@kyogle.nsw.gov.au](mailto:council@kyogle.nsw.gov.au)) or phone (6632 1611) the General Manager by midday on the Thursday preceding the meeting.

### REGIONAL ROADS INFORMATION

[www.myroadinfo.com.au](http://www.myroadinfo.com.au)

### RECYCLING FACILITIES

All Council waste facilities have recycling capabilities (if separated) and can recover oil, paper, cardboard, steel, aluminium, glass, and plastic at no charge.

#### The waste facility hours of operation are:

**Kyogle: 7.30am-12pm Monday to Friday**

**9am-4pm Saturday & Sunday**

**Woodenbong: Tuesday & Saturday 9am-4pm**

**Bonalbo: Wednesday & Saturday 9am-4pm**

**Mallanganee: Thursday & Sunday 9am-4pm**



#### A WARD

**Cr Kylie Thomas**  
0428 919 496  
[kylie.thomas@kyogle.nsw.gov.au](mailto:kylie.thomas@kyogle.nsw.gov.au)

**Cr Hayden Doolan**  
0402 097 185  
[hayden.doolan@kyogle.nsw.gov.au](mailto:hayden.doolan@kyogle.nsw.gov.au)

**Cr Janet Wilson**  
0419 600 848  
[janet.wilson@kyogle.nsw.gov.au](mailto:janet.wilson@kyogle.nsw.gov.au)

#### B WARD

**Cr John Burley (Deputy Mayor)**  
6632 1436 or 0437 252 376  
[john.burley@kyogle.nsw.gov.au](mailto:john.burley@kyogle.nsw.gov.au)

**Cr Maggie May**  
0499 551 714 or 6633 3338 (a/h)  
[maggie.may@kyogle.nsw.gov.au](mailto:maggie.may@kyogle.nsw.gov.au)

**Cr Robert Dwyer**  
6632 3352  
[bob.dwyer@kyogle.nsw.gov.au](mailto:bob.dwyer@kyogle.nsw.gov.au)

#### C WARD

**Cr Danielle Mulholland (Mayor)**  
0438 931 425  
[danielle.mulholland@kyogle.nsw.gov.au](mailto:danielle.mulholland@kyogle.nsw.gov.au)

**Cr Lindsay Passfield**  
6635 1429  
[lindsay.passfield@kyogle.nsw.gov.au](mailto:lindsay.passfield@kyogle.nsw.gov.au)

**Cr Earle Grundy**  
6665 3290  
[earle.grundy@kyogle.nsw.gov.au](mailto:earle.grundy@kyogle.nsw.gov.au)

PO BOX 11, 1 Stratheden Street, Kyogle, NSW, 2474  
Telephone: 02 6632 1611, After hours emergency: 02 6626 6800  
Facsimile: 02 6632 2228, Email: [council@kyogle.nsw.gov.au](mailto:council@kyogle.nsw.gov.au)

Website: [www.kyogle.nsw.gov.au](http://www.kyogle.nsw.gov.au)

Facebook: [www.facebook.com/KyogleCouncil](https://www.facebook.com/KyogleCouncil)

**KYOGLE COUNCIL HOURS 8.30AM-4PM  
MONDAY TO FRIDAY**