

# **Kyogle Council**



**Financial Reports**

**30 September 2017**

**Rates Statement**

**Statement of Bank Balances**

**Summary of Investments**

**Councillor Travel**

**NOTE: All Financial Data presented is unaudited at the date of presentation to Council**

## KYOGLE COUNCIL RATES STATEMENT AS AT 30 SEPTEMBER 2017

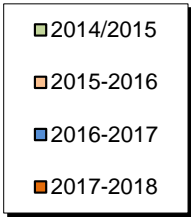
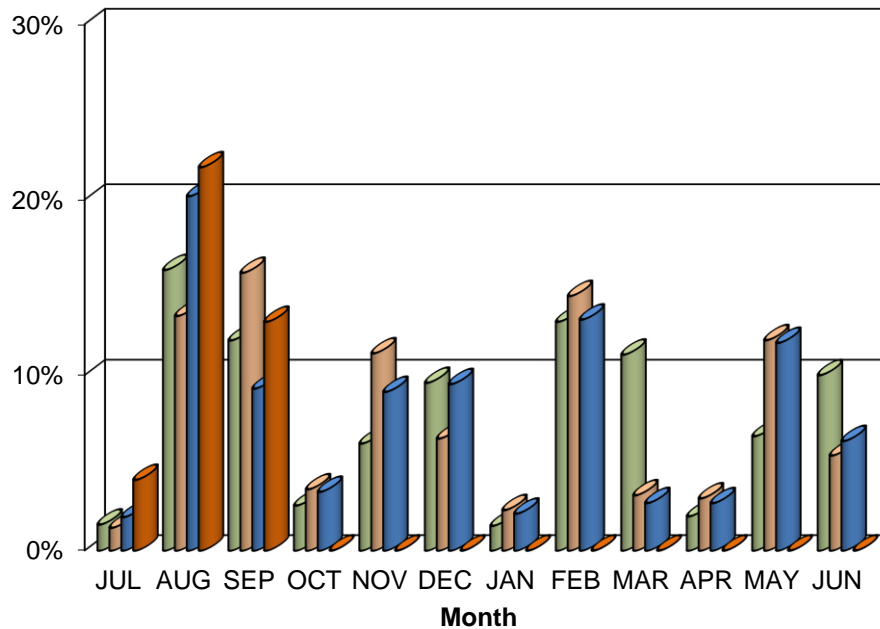
	ARREARS 1-Jul-2017	NET CHARGES 2017-2018	PAYMENTS	OUTSTANDING BALANCE 30/9/2017	ARREARS 30/9/2017	% TOTAL COLLECTED incl. ARREARS	% ARREARS COLLECTED 2017-2018
RATES, SERVICES AND INTEREST	870,325.46	8,239,343.85	3,543,816.64	5,565,852.67	498,006.83	38.90%	42.78%

PRESENTED TO COUNCIL OCTOBER 2017

**Note:**

Some ratepayers have made arrangements, whilst others are at different stages of legal action.

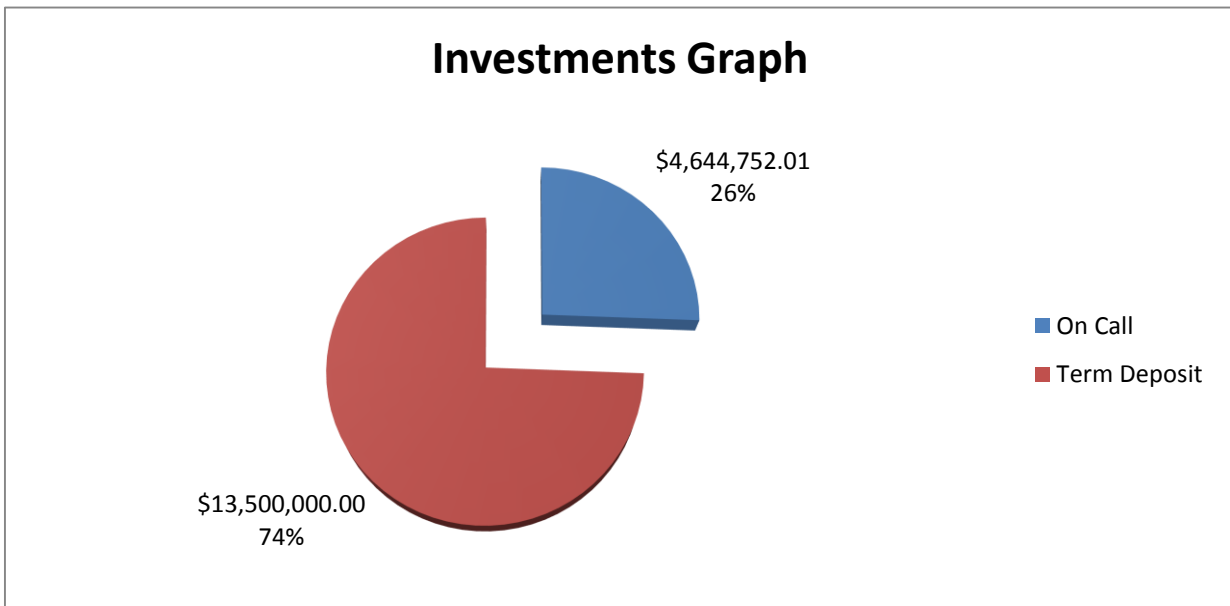
### Rate Collections Analysis % Collected Each Month



**KYOGLE COUNCIL FINANCIAL ANALYSIS REPORT AS AT 30/09/2017**

Institution	Investment Type	Investment Date	Maturity Date	Interest Type	Interest Frequency	Interest rate	Investment Amount	% of Portfolio
CBA	On Call	At Call	At Call	Variable	Monthly		4,644,752.01	25.60%
							<b>Total Cash at Call</b>	<b>4,644,752.01</b>
								<b>25.60%</b>
Suncorp Metway	Term Deposit	24-Jul-17	03-Oct-17	Fixed	Maturity	2.05%	1,400,000.00	7.72%
Bankwest	Term Deposit	09-Aug-17	09-Oct-17	Fixed	Maturity	2.25%	3,000,000.00	16.53%
Suncorp Metway	Term Deposit	04-Aug-17	10-Oct-17	Fixed	Maturity	2.15%	2,000,000.00	11.02%
NAB	Term Deposit	08-Aug-17	17-Oct-17	Fixed	Maturity	2.20%	3,000,000.00	16.53%
Suncorp Metway	Term Deposit	21-Aug-17	24-Oct-17	Fixed	Maturity	2.15%	2,100,000.00	11.57%
NAB	Term Deposit	21-Sep-17	01-Nov-17	Fixed	Maturity	2.01%	2,000,000.00	11.02%
							<b>Total Cash at Call</b>	<b>13,500,000.00</b>
								<b>74.40%</b>
							<b>Total Investment Portfolio</b>	<b>\$18,144,752.01</b>

I hereby certify that the above investments have been made in accordance with section 625 of the Local Government Act, 1993, the Local Government (General) Regulation 2005 and Council's Investment Policy - *Glenn Rose, Responsible Accounting Officer.*



<b>Kyogle Council</b>	
<b>STATEMENT OF FUND BALANCES as at</b>	
<b>30-Sep-17</b>	
Fund	Closing Balance
<b>General Fund</b>	
Unrestricted	6,332,553.28
Internally Restricted	4,240,389.00
State Highways	1,685,505.87
Quarries	690,482.68
Plant	2,334,900.17
Externally Restricted	636,638.50
<b>Total General Fund</b>	<b>15,920,469.50</b>
<b>Restricted</b>	
Water Supplies	1,519,202.68
Sewerage Systems	761,566.71
Domestic Waste	(76,030.67)
Trust Fund	19,543.79
<b>Total Restricted</b>	<b>2,224,282.51</b>
<b>Total Consolidated Funds at Bank</b>	<b>18,144,752.01</b>

## COUNCILLORS TRAVEL EXPENSES Sep-17

Councillor Name	Kilometres Claimed		Current Rate per Kilometre	Amount Reimbursed	
	Sep-17	YTD		Sep-17	YTD
K. Thomas	0	0	\$0.78	\$0.00	\$0.00
H. Doolan	0	0	\$0.78	\$0.00	\$0.00
J. Wilson	0	0	\$0.78	\$0.00	\$0.00
J. Burley	612	1,553	\$0.68	\$416.16	\$1,056.04
R. Dwyer	0	0	\$0.78	\$0.00	\$0.00
D. Mulholland	1,484	1,960	\$0.78	\$1,157.52	\$1,528.80
L. Passfield	663	1,393	\$0.78/\$0.68	\$494.74	\$1,002.34
M. May	0	0	\$0.78	\$0.00	\$0.00
E. Grundy	0	1,520	\$0.78	\$0.00	\$1,185.60
<b>Total</b>	<b>2,759</b>	<b>6,426</b>		<b>\$2,068.42</b>	<b>\$4,772.78</b>

### **Notes**

- (1) The above figures represent amounts actually paid.
- (2) The amounts paid in the current month will relate to claims for travel in prior months
- (3) Some councillors may have claims outstanding for more than one month.