

Kyogle Council



Financial Reports

28 March, 2014

Rates Statement

Statement of Bank Balances

Summary of Investments

Councillor Travel

NOTE: All Financial Data presented is unaudited at the date of presentation to Council

KYOGLE COUNCIL RATES STATEMENT AS AT 1 APRIL 2014

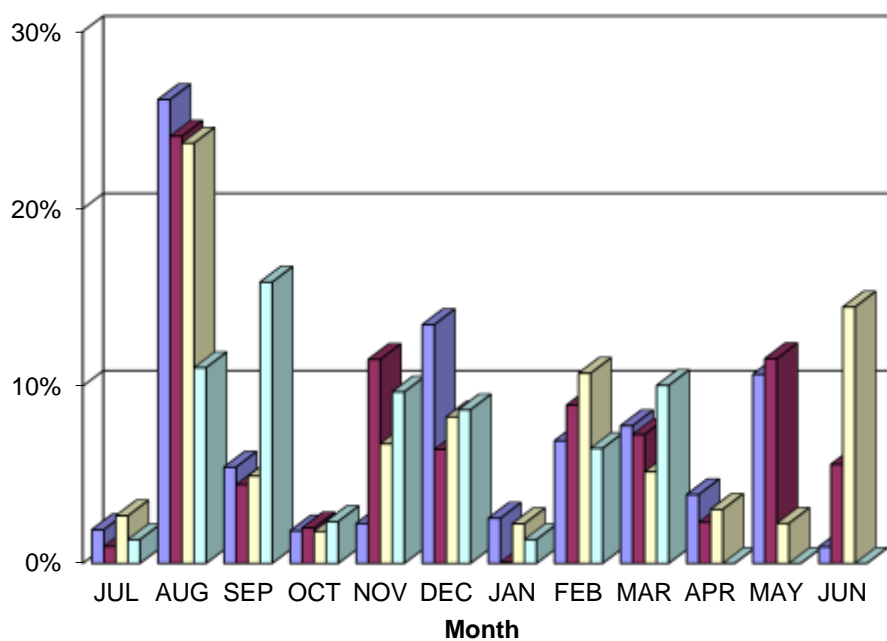
	ARREARS 1-Jul-13	NET CHARGES 2013-2014	PAYMENTS	OUTSTANDING BALANCE	PERCENTAGE COLLECTED
RATES, SERVICES AND INTEREST	1,285,338.30	8,356,883.17	6,443,929.26	3,198,292.21	66.83%

PRESENTED TO COUNCIL APRIL 2014

Note:

Some ratepayers have made arrangements, whilst others are at different stages of legal action.

Rate Collections Analysis % Collected Each Month



■ 2010/2011

■ 2011/2012

■ 2012/2013

■ 2013/2014

KYOGLÉ COUNCIL	
STATEMENT OF BANK BALANCES	
FUND	CLOSING BANK BALANCE 26-Mar-14
GENERAL FUND	
UNRESTRICTED	(129,372.67)
INTERNALLY RESTRICTED	4,058,035.00
STATE HIGHWAYS	2,296,215.60
QUARRIES	1,052,836.08
PLANT	7,706,542.04
EXTERNALLY RESTRICTED	401,666.00
	15,385,922.05
RESTRICTED	
WATER SUPPLIES	42,059.93
SEWERAGE SYSTEMS	668,977.21
DOMESTIC WASTE	139,349.27
ORDINARY TRUST	12,155.79
	862,542.20
CONSOLIDATED FUNDS	16,248,464.25

KYOGLE COUNCIL	
STATEMENT OF BANK BALANCES	
FUND	CLOSING BANK BALANCE 26-Mar-14
GENERAL FUND	
UNRESTRICTED	(129,372.67)
INTERNALLY RESTRICTED	4,058,035.00
STATE HIGHWAYS	2,296,215.60
QUARRIES	1,052,836.08
PLANT	7,706,542.04
EXTERNALLY RESTRICTED	401,666.00
	15,385,922.05
RESTRICTED	
WATER SUPPLIES	42,059.93
SEWERAGE SYSTEMS	668,977.21
DOMESTIC WASTE	139,349.27
ORDINARY TRUST	12,155.79
	862,542.20
CONSOLIDATED FUNDS	16,248,464.25

KYOGLE COUNCIL	
STATEMENT OF BANK BALANCES	
FUND	CLOSING BANK BALANCE 26-Mar-14
GENERAL FUND	
UNRESTRICTED	(129,372.67)
INTERNALLY RESTRICTED	4,058,035.00
STATE HIGHWAYS	2,296,215.60
QUARRIES	1,052,836.08
PLANT	7,706,542.04
EXTERNALLY RESTRICTED	401,666.00
	15,385,922.05
RESTRICTED	
WATER SUPPLIES	42,059.93
SEWERAGE SYSTEMS	668,977.21
DOMESTIC WASTE	139,349.27
ORDINARY TRUST	12,155.79
	862,542.20
CONSOLIDATED FUNDS	16,248,464.25

KYOGLE COUNCIL	
STATEMENT OF BANK BALANCES	
	CLOSING BANK
FUND	BALANCE
	26-Mar-14
GENERAL FUND	
UNRESTRICTED	(129,372.67)
INTERNALLY RESTRICTED	4,058,035.00
STATE HIGHWAYS	2,296,215.60
QUARRIES	1,052,836.08
PLANT	7,706,542.04
EXTERNALLY RESTRICTED	401,666.00
	15,385,922.05
RESTRICTED	
WATER SUPPLIES	42,059.93
SEWERAGE SYSTEMS	668,977.21
DOMESTIC WASTE	139,349.27
ORDINARY TRUST	12,155.79
	862,542.20
CONSOLIDATED FUNDS	16,248,464.25

KYOGLE COUNCIL	
STATEMENT OF BANK BALANCES	
FUND	CLOSING BANK BALANCE 26-Mar-14
GENERAL FUND	
UNRESTRICTED	(129,372.67)
INTERNALLY RESTRICTED	4,058,035.00
STATE HIGHWAYS	2,296,215.60
QUARRIES	1,052,836.08
PLANT	7,706,542.04
EXTERNALLY RESTRICTED	401,666.00
	15,385,922.05
RESTRICTED	
WATER SUPPLIES	42,059.93
SEWERAGE SYSTEMS	668,977.21
DOMESTIC WASTE	139,349.27
ORDINARY TRUST	12,155.79
	862,542.20
CONSOLIDATED FUNDS	16,248,464.25

KYOGLE COUNCIL	
STATEMENT OF BANK BALANCES	
FUND	CLOSING BANK BALANCE 26-Mar-14
GENERAL FUND	
UNRESTRICTED	(129,372.67)
INTERNALLY RESTRICTED	4,058,035.00
STATE HIGHWAYS	2,296,215.60
QUARRIES	1,052,836.08
PLANT	7,706,542.04
EXTERNALLY RESTRICTED	401,666.00
	15,385,922.05
RESTRICTED	
WATER SUPPLIES	42,059.93
SEWERAGE SYSTEMS	668,977.21
DOMESTIC WASTE	139,349.27
ORDINARY TRUST	12,155.79
	862,542.20
CONSOLIDATED FUNDS	16,248,464.25

KYOGLE COUNCIL	
STATEMENT OF BANK BALANCES	
FUND	CLOSING BANK BALANCE 26-Mar-14
GENERAL FUND	
UNRESTRICTED	(129,372.67)
INTERNALLY RESTRICTED	4,058,035.00
STATE HIGHWAYS	2,296,215.60
QUARRIES	1,052,836.08
PLANT	7,706,542.04
EXTERNALLY RESTRICTED	401,666.00
	15,385,922.05
RESTRICTED	
WATER SUPPLIES	42,059.93
SEWERAGE SYSTEMS	668,977.21
DOMESTIC WASTE	139,349.27
ORDINARY TRUST	12,155.79
	862,542.20
CONSOLIDATED FUNDS	16,248,464.25

KYOGLÉ COUNCIL	
STATEMENT OF BANK BALANCES	
	CLOSING BANK
FUND	BALANCE
	26-Mar-14
GENERAL FUND	
UNRESTRICTED	(129,372.67)
INTERNALLY RESTRICTED	4,058,035.00
STATE HIGHWAYS	2,296,215.60
QUARRIES	1,052,836.08
PLANT	7,706,542.04
EXTERNALLY RESTRICTED	401,666.00
	15,385,922.05
RESTRICTED	
WATER SUPPLIES	42,059.93
SEWERAGE SYSTEMS	668,977.21
DOMESTIC WASTE	139,349.27
ORDINARY TRUST	12,155.79
	862,542.20
CONSOLIDATED FUNDS	16,248,464.25

KYOGLE COUNCIL

SUMMARY OF INVESTMENTS AS AT 26/03/14									
---------------------------------------	--	--	--	--	--	--	--	--	--

	BANK	TYPE	TERM	AMOUNT	RATE P.A.	DUE DATE
1	COMMONWEALTH	TERM DEPOSIT	28 DAYS	2,005,843.29	3.44%	March 27, 2014
2	COMMONWEALTH	TERM DEPOSIT	90 DAYS	1,500,000.00	3.25%	April 13, 2014
3	COMMONWEALTH	TERM DEPOSIT	89 DAYS	1,500,000.00	3.25%	May 6, 2014
4	BANKWEST	TERM DEPOSIT	60 DAYS	1,500,000.00	3.40%	May 16, 2014
5	BANKWEST	TERM DEPOSIT	91 DAYS	3,000,000.00	3.50%	May 19, 2014
6	SUNCORP METWAY	TERM DEPOSIT	90 DAYS	2,000,000.00	3.45%	May 28, 2014
7	SUNCORP METWAY	TERM DEPOSIT	90 DAYS	1,400,000.00	3.45%	June 17, 2014

				12,905,843.29		
--	--	--	--	---------------	--	--

[illegible]

	I hereby certify that the above investments have been made in accordance with section 625 of the Local Government Act, 1993, the Local Government (General) Regulation 2005 and Councils Investment Policy.					

(GLENN ROSE)						

<u>RESPONSIBLE ACCOUNTING OFFICER</u>									
---------------------------------------	--	--	--	--	--	--	--	--	--

COUNCILLORS TRAVEL EXPENSES

Mar-14

COUNCILLOR NAME	KLMS CLAIMED		CURRENT KM RATE	AMT REIMBURSED	
	MONTHS	YTD		MONTH	YTD
R. Brown	0	0	0.74	0.00	0.00
C. Simpson	0	0	0.74	0.00	0.00
J. Wilson	0	0	0.74	0.00	0.00
J. Burley	0	0	0.74	0.00	0.00
M. Creedy	324	1,744	0.74	239.76	1,290.56
R. Dwyer	0	0	0.74	0.00	0.00
D. Mulholland	752	7,992	0.74/0.65	488.80	5,606.64
M. Reardon	0	0	0.74	0.00	0.00
L. Passfield	1,479	4,652	0.65/0.74	961.35	3,099.37
Total	2,555	14,388		1,689.91	9,996.57

Notes

- (1) The above figures represent amounts actually paid.
- (2) The amounts paid in the current month will relate to claims for travel in prior months
- (3) Some councillors may have claims outstanding for more than one month.