

Kyogle Council



Financial Reports

28 November, 2014

Rates Statement

Statement of Bank Balances

Summary of Investments

Councillor Travel

NOTE: All Financial Data presented is unaudited at the date of presentation to Council

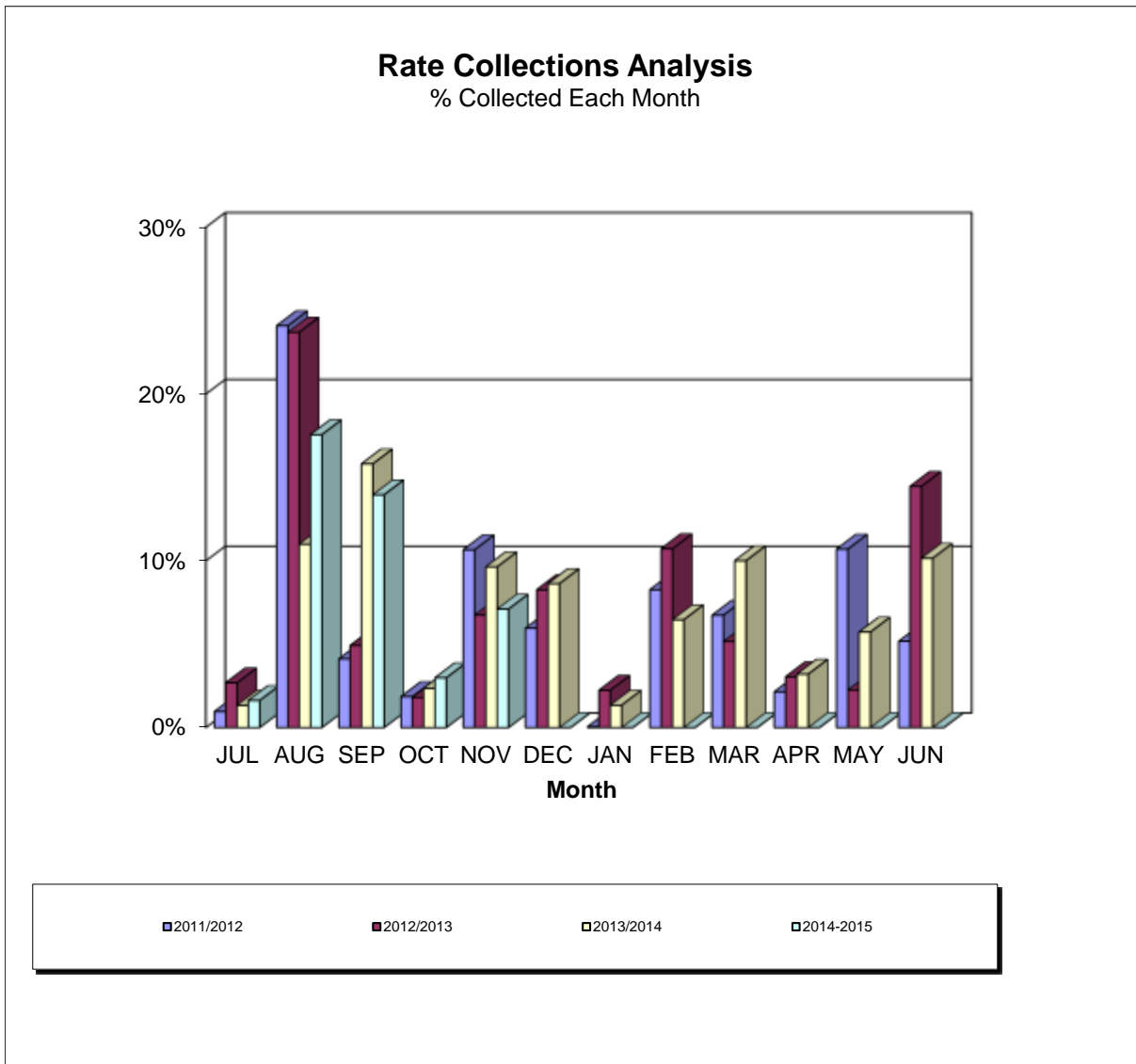
KYOGLE COUNCIL RATES STATEMENT AS AT 25 NOVEMBER 2014

	ARREARS 1-Jul-14	NET CHARGES 2014-2015	PAYMENTS	OUTSTANDING BALANCE	PERCENTAGE COLLECTED
RATES, SERVICES AND INTEREST	1,385,856.89	7,422,478.61	3,808,452.22	4,999,883.28	43.24%

PRESENTED TO COUNCIL DECEMBER 2014

Note:

Some ratepayers have made arrangements, whilst others are at different stages of legal action.



KYOGLE COUNCIL

STATEMENT OF BANK BALANCES

FUND	CLOSING BANK BALANCE 25-Nov-14
GENERAL FUND	
UNRESTRICTED	2,340,609.63
INTERNALLY RESTRICTED	3,775,370.00
STATE HIGHWAYS	1,879,329.42
QUARRIES	1,034,476.97
PLANT	7,753,112.44
EXTERNALLY RESTRICTED	200,061.60
	16,982,960.06
RESTRICTED	
WATER SUPPLIES	(235,473.35)
SEWERAGE SYSTEMS	726,345.99
DOMESTIC WASTE	7,774.91
ORDINARY TRUST	10,591.79
	509,239.34
CONSOLIDATED FUNDS	17,492,199.40

KYOGLE COUNCIL

SUMMARY OF INVESTMENTS AS AT 25/11/14

	BANK	TYPE	TERM	AMOUNT	RATE P.A.	DUE DATE
1	COMMONWEALTH	TERM DEPOSIT	31 DAYS	2,005,843.29	3.02%	November 27, 2014
2	BANKWEST	TERM DEPOSIT	90 DAYS	3,000,000.00	3.35%	December 15, 2014
3	SUNCORP METWAY	TERM DEPOSIT	30 DAYS	1,400,000.00	2.90%	December 17, 2014
4	BANKWEST	TERM DEPOSIT	62 DAYS	1,500,000.00	3.35%	January 19, 2015
5	SUNCORP METWAY	TERM DEPOSIT	62 DAYS	2,000,000.00	3.10%	January 27, 2015
6	COMMONWEALTH	TERM DEPOSIT	92 DAYS	1,500,000.00	2.90%	February 6, 2015
				11,405,843.29		

PRESENTED TO COUNCIL ON DECEMBER 8, 2014

I hereby certify that the above investments have been made in accordance with section 625 of the Local Government Act, 1993, the Local Government (General) Regulation 2005 and Councils Investment Policy.

(GLENN ROSE)
RESPONSIBLE ACCOUNTING OFFICER

COUNCILLORS TRAVEL EXPENSES

Nov-14

COUNCILLOR NAME	KLMS CLAIMED		CURRENT KM RATE	AMT REIMBURSED	
	MONTHS	YTD		MONTH	YTD
R. Brown	0	0	0.78	0.00	0.00
C. Simpson	0	0	0.78	0.00	0.00
J. Wilson	0	0	0.78	0.00	0.00
J. Burley	0	0	0.78	0.00	0.00
M. Creedy	0	438	0.78	0.00	341.64
R. Dwyer	0	0	0.78	0.00	0.00
D. Mulholland	0	2,395	0.78/0.68	0.00	1,868.10
M. Reardon	0	0	0.78	0.00	0.00
L. Passfield	959	2,969	0.78/0.68	710.18	2,239.45
Total	959	5,802		710.18	4,449.19

Notes

- (1) The above figures represent amounts actually paid.
- (2) The amounts paid in the current month will relate to claims for travel in prior months
- (3) Some councillors may have claims outstanding for more than one month.