

Gold Coast Tweed Motorsporting Club Inc.

PO Box 8582 Gold Coast Mail Centre QLD 9726

Contacts:

Clerk of the Course Stephen Davies	0733491882 / 0405100021
Deputy Clerk of the Course Gary Mitchell	07 55783173 / 0409896295
Event Secretary John Careless	0755348986 / 0413250005



Assistant Works Engineer
Derryn Nix
Kyogle Council
PO Box 11
Kyogle NSW 2474

21.2.13

Application to Kyogle Council on behalf of The Gold Coast Tweed Motorsporting Club Inc (GCTMC Inc).

Version 2

The Gold Coast Tweed Motorsporting Club Inc (GCTMC Inc) is seeking permission and support from the Kyogle Council to conduct the ***Border Ranges Rally*** over the 8th 9th 10th 11th August 2013 on roads within the region.

The GCTMC Inc is seeking the following commitment by the Kyogle Council:

- 1. Approvals to conduct the proposed event*
- 2. That the Kyogle Council provides a budget for Council to provide traffic control services*
- 3. That the maintenance program for the year be developed to ensure that each of the rally roads have a patch grade in the four weeks prior to the event.*
- 4. Preparation of ground at Hillyards Spectator Point for safe spectator access and rubbish bins to be made available for this site.*

There are proposed changes to the event's previous format for 2013. Traditionally the event has been centred on Woodenbong and Urbenville. However for 2013 the rally will be centred on Kyogle as it was proposed for the 2012 event. The rally will also be a much bigger event

than previous events. Indeed it is anticipated the event will be a 'rally of significance' for Classic Rallying in Australia with interest coming from as far away as New Zealand, Far North Queensland and Victoria

The organisers of the rally wish to involve members of the local communities in the event as much as possible. The two communities of Woodenbong and Urbenville have been very supportive of previous event, and have in turn received great financial benefits. The organisers recognise this and will continue to offer them involvement in the 2013 event. However, with the expansion into Kyogle the organisers seek this communities' involvement. It is with this in mind that the organisers suggest the slogan for the rally might be:

“Our Rally ... the Border Ranges Rally ... It's a Classic Event”.

As per our recent discussions the Gold Coast Tweed Motorsporting Club wish to apply for financial assistance from Kyogle Council to offset the cost of employing experienced traffic controllers where volunteers are not available, as required for the running 2013 Border Ranges Rally. Most volunteer TCO's such as the RFA and SES will be occupied with other duties.

The attached documents include a brief overview of the event (Version 2), maps of the stages and a proposed schedule. Documentation including a Traffic Management Plan and a Safety Plan including protocols for dealing with critical incidents, evacuations, spectators and officials will be prepared and presented when an agreement has been reached with Council on the event format and roads to be used.

Please contact the Clerk of the Course Stephen Davies or myself at your earliest convenience to discuss any details that require clarification. We look forward to Council's favourable consideration of our requests.

Yours faithfully
John Careless
Secretary Border Ranges Rally
rjcareless@gmail.com
0413250005

Our Rally

The Border Ranges Rally

It's a Classic Event

Event Overview

Version 2

8th 9th 10th 11th
August 2013

GOLD COAST-TWEED MOTORSPORTING CLUB Inc.

*With support from the communities of
Kyogle, Woodenbong and Urbenville*



1	EVENT DETAILS	4
1.1	Event	4
1.1.1	Goals for the Conduct of the BRR by the GCTMC Inc in the Kyogle Region	4
1.1.2	Event Description	4
1.1.3	Event Authority	5
1.1.4	Event Structure	6
1.2	The Venues	8
1.2.1	Event Headquarters	8
1.2.2	Event Format	9
1.3	Contact During the Event	9
1.4	Patron Details	10
1.5	Movie Screening	10
1.6	Aquatic Events	10
1.7	Community Conciliation	10
2	COUNCIL APPROVALS	11
2.1	Development Application Requirements	11
2.2	Section 68 Applications	11
2.3	Approval for Activities Within a Road Reserve	11
2.4	Workplace Health and Safety	11
2.5	Potential Hazards	11
2.6	Contingency Plan and Risk Management Plan	12
2.7	Site Plan	13
3	PUBLIC HEALTH	13
3.1	Temporary Food Stalls	13
3.2	Toilets	13
3.3	Alcohol	13
3.4	Water	13
3.5	Shelter	14
3.6	Waste Management	14
3.7	Noise	14
4	PUBLIC SAFETY	14
4.1	Security and Crowd Control	14
4.2	Police Contact	14
4.3	Place of Public Assembly	14
4.4	Lighting and Power	15
4.5	Temporary structures	15
4.6	Fireworks and Pyrotechnics	15

5	INSURANCE	15
5.1	Liquor Licences	15
5.2	Public Liability	15
5.3	Health and Safety Permits	15
6	TRAFFIC AND PEDESTRIAN MANAGEMENT	16
6.1	Traffic Management Plan	16
6.2	Road Closures	16
7	INCIDENT MANAGEMENT PLAN	16
7.1	Event / Incident Control Centre	16
7.2	Incident Management Plan Including First Aid Arrangements	16
7.3	Incident Management Control Details	16
7.4	Fire Fighting Equipment	16
7.5	Fire Danger Period	16
7.6	Lost and Stolen Property and Lost Children	17
7.7	Incident Reports	17
8	EVENT PROMOTION	17
8.1	Ticketing	17
8.2	Signage	17
8.3	Health Promotion	17
8.4	Advertising	17
9	DOCUMENT TRACEABILITY	17
9.1	Keeping Documents and Information	17
9.2	Documents to be Kept	17
10	USEFUL CONTACT NUMBERS	18

1. EVENT DETAILS

1.1 Event

The *Border Ranges Rally* is to be conducted over the 8th 9th 10th 11th August 2013.

1.1.1 Goals for the Conduct of the BRR by the GCTMC Inc. in the Kyogle Region

- Minimise impact where practicable whilst broadening economic benefits
- Promoting the Kyogle Region
- Provide an entertaining event for the people
- Conduct an exceptional rally

1.1 .2 Event Description

The Rally is a Special Stage Car Rally conducted on closed shire roads. It is a Queensland State Championship Rally but primarily it is a 'rally of significance' for Classic Rally Cars. The rally will involve the communities of Kyogle, Woodenbong and Urbenville.

Conducting the rally in the region will help promote the area as well as providing a direct economic benefit. With interest in the event coming from as far away as New Zealand, Far North Queensland and Victoria we envisage the event will bring approximately 500 people including competitors, service crews and officials into the region. Spectators will be additional to this number. They will all require accommodation, food, and petrol for a minimum of three days.

The event now being four days in length will:

- Increase visitor length of stay
- Increase visitor expenditure
- Improve destination awareness as a travel or tourism destination
- Increase civic pride or community solidarity
- Increase knowledge concerning the potential for investment and commercial activity in the region
- Increase the permanent level of local interest and participation in types of activity associated with the event
- Increase awareness of non-local perceptions

We actively seek the involvement of community groups such as the Rural Fire Brigade, Community Associations, Showground Trusts, and the SES, etc. In this way community groups can raise much needed funds for new equipment and training. We hope that the small inconvenience the event may cause will be far outweighed by the economic and social benefits, as well as adding colour and excitement to the local community.

The event has been successfully conducted in the Woodenbong and Urbenville areas since 2006 and has strong local support. We are looking to expand the event into the Kyogle area for 2013 based at the Kyogle Showgrounds.

1.1 .3 Event Authority

Governing Authorities

The event is conducted under a permit issued by the Confederation of Australian Motorsport (CAMS). As such the event complies with the prescribed requirements of CAMS including, but not limited to, their national competition rules, workplace health and safety policy, spectator policy and environmental policy. CAMS is the governing body for the WRC, the Melbourne F1 and the Bathurst 1000. In addition to the CAMS permit, the event will also be conducted with approval from the NSW Police, Kyogle Council and Tenterfield Shire Council.

Promoter

The event Promoter is the Gold Coast Tweed Motorsporting Club Inc. The GCTMC Inc. is a not-for-profit club whose aim is to improve driving standards and promote driver education in young adults through participation in strictly controlled motorsport activities. The Border Ranges Rally is our main event for the year and the small profit (a loss was made in 2012) made provides the funds we need to subsidise our young driver education programs during the year.

Correspondence: Secretary John Careless
2012 Border Ranges Rally
PO Box 8582
Gold Coast Mail Centre, Qld 9726
Email ... rjcareless@gmail.com

Organising Committee

Clerk of the Course	Stephen Davies	0405100021
Deputy Clerk of the Course	Gary Mitchell	0409896295
Secretary	John Careless	0755348986 (H) 0413250005
Assistant Clerk of the Course	Brad Winter (Local Rep)	0407604477

Competitor Eligibility

All competitors in the event are required to have a current CAMS rally license. Drivers must possess a valid civil license and all vehicles must be road-registered and fit for competition. All vehicles are scrutineered prior to the event, and during the event if required and must conform to ADR noise emission levels.

1.1.4 Event Structure

Road Closure Procedures

Each competitive section of the rally (called a 'Stage') will have supervised positive road closure. This means that at the start and finish of each stage will be Traffic Control Officers (TCOs) accredited to perform the road closure roles. A unit of the Rural Fire Service and a Medical Intervention Vehicle (M.I.V.) carrying at least one Paramedic will be stationed at the start of each stage.

Each access point to the stages will be physically blocked and manned by event officials and each residential driveway will be either manned and/or positively secured. Officials will be identified by high visibility vests. Officials will also be placed along the stages and be in radio contact with rally headquarters. Procedures will be in place to facilitate the evacuation of any residents along the stages should an emergency arise. The same procedures will also allow emergency services access to properties along the stages.

Crews drive between competitive stages on 'liaison' sections. These roads are open to traffic. Crews are required to drive on these sections at normal road speeds observing all road rules. These are strictly enforced by both the organisers and the Police.

Recognizance of the route will be conducted by the competing crews on Friday. Crews check the roads against the road book guide supplied by the organisers. Most crews do not use their rally cars for this procedure. Again crews are required to drive on these sections at normal road speeds observing all road rules. The organisers usually set the speed limit to slower than normal conditions for these procedures. These are strictly enforced by both the organisers and the Police. Every effort will be made to avoid school bus times. Crews found traversing the route prior to recognizance, or the event, are subject to removal from the event.

It is worth noting that the residence's visited prior to last year's rally, including the stages adjacent to Kyogle; none were against the event being conducted. In fact many were excited that the event was coming and had planned big parties for friends.

Advertising & Notification of Road Closures

The NSW Police Department, Kyogle Council, the Tenterfield Shire Council and the RTA are approached with detailed times and give agreement to close affected roads. The Ambulance Service, RFS, RTA and Police for each region are all notified of the event and road closures. The Hospitals in Urbenville, Kyogle, and Tenterfield are all notified of the event.

The organisers make every effort to visit each residence along the stages used in the rally to discuss the event. ALL residences affected by the road closures will be provided with written information detailing, the rally procedures prior to the event, exiting their property in an emergency procedure, and a secure contact phone number linked directly to Rally Head Quarters.

Appropriate road signage will be placed on access roads indicating the closure. The road closure times will also have been previously advertised in the local press and on the Council's web site. Road closure notices (A3 size) are placed at highly visible locations on each of the roads that will be closed for the event. These notices will be posted approximately three (3) weeks prior to the event.

Event communications

The event will have a dedicated radio network with coverage over the area of the route. Rally officials at all control locations, locations along the route, spectator viewing points and manning the MIVs will have a radio to directly contact rally headquarters if required. This same network will be used to track the progress of vehicles as described in our Safety Plan.

Spectators

The event will have four designated spectator viewing locations.

- Friday night is Kyogle Showgrounds
- Saturday is Urbenville and Woodenbong
- Sunday is Hillyards

Special attention will be given during the set-up of the event to ensure the areas are adequately defined and managed. Plans detailing layout will be promulgated and the location of the points advertised. Only one spectator point will be able to be viewed at the one time thereby avoiding the need for spectators to hurry to each location. At each location there will be clearly defined areas for viewing and CAM'S accredited officials to ensure that spectators stand in the appropriate areas and do not wander into unsafe locations; or behave in a way that puts themselves or others at risk. Any such behaviour may result in the stage being temporarily suspended until the issues are resolved.

Traffic Management Plan and Safety Plan

A Traffic Management Plan and a Safety Plan including protocols for dealing with critical incidents, evacuations, spectators and officials will be prepared and presented when an agreement has been reached with Council on the event format and roads to be used.

1.2 The Venues

The roads selected for rallying are chosen to test the ability of the crew and their vehicle. However, as many of the vehicles competing are extremely expensive Classic Rally Cars it is vital that the roads do not damage these cars because of poor surface quality. *Indeed the reason why this event has become so popular with the Classic Rally fraternity is because of the quality of the roads previously used. The organisers of the BRR guard this point vigorously.* Extreme wet weather would mean the event would not be able to be conducted on safety grounds.

The roads chosen do not present a threat to flora as they are formed Shire Roads. The roads are almost always in great (often in better) condition following the passing of the rally cars because of the speed with which they pass over the roads ‘blowing’ off the loose surface and ‘cleaning’ the road. The event is also conducted mainly during daylight hours in areas that are non-sensitive to fauna.

As mentioned earlier the organisers make every effort to reach an agreement with residents along the route. Road closure times are considered carefully to minimise inconvenience. It is worth noting again that the residence’s visited prior to last year’s rally, including the stages adjacent to Kyogle; none were against the event being conducted. In fact many were excited that the event was coming and had planned big parties for friends.

Access for emergency vehicles has been mentioned earlier but it worth noting that because the organisers have emergency vehicles stationed at the start of each stage residents have, in fact, got a range of emergency personnel virtually on their door step.

Spectator points are chosen to allow for ease of safe access for people of differing abilities. They are controlled sites and have been chosen for the best viewing possibilities.

1.2.1 Event Headquarters

Thursday 8 th	Kyogle Showgrounds
Friday 9 th	Kyogle Showgrounds
Saturday 10 th	Woodenbong Showgrounds
Sunday 11 th	Kyogle Showgrounds

1.2.2 Event Format

The proposed event format is as follows:

August 2013	Action	Venue
Thursday 8th (part day only)	Media promotional drives	Road adjacent to Kyogle
Friday 9th	Recognizance of roads	Competition Stages – will NOT require road closures
	Cars on display	Kyogle Showground's Oval
Saturday 10th	Competition dispersed throughout the day including a night spectator stage in Woodenbong	Roads adjacent to Woodenbong and Urbenville Servicing of vehicles based at Woodenbong Showgrounds
Sunday 11th	Competition dispersed throughout the day including a spectacular spectator point	Roads adjacent to Kyogle Servicing of vehicles based at Kyogle Showgrounds
	Presentation of trophies	Stratheden Street and Roxy Lane Kyogle

1.3 Contact during Event

Event Headquarters

Thursday 8 th	Kyogle Showgrounds	0405100021 and by Rally Command Radio Network
Friday 9 th	Kyogle Showgrounds	0405100021 and by Rally Command Radio Network
Saturday 10 th	Woodenbong Showgrounds	0405100021 and by Rally Command Radio Network
Sunday 11 th	Kyogle Showgrounds	0405100021 and by Rally Command Radio Network

In addition the RFS, SES, Ambulance and the NSW Police will have their own communications networks which will be linked to the Rally Communications Network.

1.4 Patron Details

Competitors and their Service Crews are mostly family people while the Event Officials are usually middle aged and again often represented by families.

Spectators range in age but are not usually represented by young people. Most again are family people. The aim by the organisers is to offer free spectating. However, this will be subject to the cost incurred in establishing venues that meet Council requirements.

1.5 Movie Screening

Not applicable

1.6 Aquatic Events

Not applicable

1.7 Community Conciliation

The organisers are particularly mindful of the inclusion of the community in the conduct of the rally. There are proposed major changes to the events usual format for 2013. Traditionally the event has been centred on Woodenbong and Urbenville. However for 2013 the rally will be centred on Kyogle. The rally will also be a much bigger event than previous events. Indeed it is anticipated the event will be a 'rally of significance' for Classic Rallying in Australia.

The organisers of the rally wish to involve members of the local communities in the event as much as possible. The two communities of Woodenbong and Urbenville have been very supportive of the event and have in turn received great financial benefits. The organisers recognise this and will continue to offer them involvement in the 2013 event. However, with the expansion into Kyogle the organisers seek this communities' involvement. It is with this in mind that the organisers suggest the slogan for the rally might be "*Our Rally ... the Border Ranges Rally ... It's a Classic Event*"

The organisers make every effort to visit each residence along new stages used in the rally to discuss the event. Road closure times are considered carefully to minimise inconvenience. ALL residences affected by the road closures will be provided with written information detailing, the rally procedures prior to the event, exiting their property in an emergency procedure, and a secure contact phone number linked directly to Rally Head Quarters.

It is worth noting again that the residence's visited prior to last year's rally, including the stages adjacent to Kyogle; none were against the event being conducted. In fact many were excited that the event was coming and had planned big parties for friends.

2 COUNCIL APPROVALS

2.1 Development Application Requirements

The organisers have been advised that a Development Application is not required.

2.2 Section 68 Applications

The organisers believe Section 68 Applications should not be required, however, if advised by Council these will be applied for as a matter of course.

2.3 Approval for Activities within a Road Reserve

The organisers will be in contact with the RTA during the process of our road closure applications.

2.4 Workplace Health & Safety

GCTMC INC OCCUPATIONAL HEALTH AND SAFETY POLICY STATEMENT

The Gold Coast Tweed Motorsporting Club Inc. (GCTMC) is committed to providing a safe and healthy environment for all stakeholders. The GCTMC will strive to minimise risks to the health, safety and welfare of all competitors, voluntary workers, officials, contractors and visitors at the Border Ranges Rally (the event). The GCTMC, and event organising committee, supports and encourages a proactive approach in identifying, assessing and reducing risk at the event.

As part of its commitment, the GCTMC will comply with relevant Occupational Health and Safety legislation. We will ensure that due care is taken to protect the safety of stakeholders and the public. We will comply with relevant Occupational Health and Safety legislation and the safety policies and procedures of the Confederation of Australian Motorsport (CAMS). The GCTMC expects that all stakeholders and visitors to the event will also comply with these policies and procedures, and at all times protect the health, safety and welfare of themselves, their colleagues, event patrons and the community.

Steven Davies – Clerk of the Course, Border Ranges Rally

2.5 Potential Hazards

The very nature of this competition means there are risks associated. However, each aspect of the event is considered for hazards reduction. The organisers are cognisant of the need to present a situation where risk is reduced by considering the following (This list is not exhaustive):

- terrain that can present slips, trips and falls for spectators and officials;
- proximity to water bodies re pollution;
- wildlife/fauna, including insects and snakes;
- bushfire potential;
- extremes of temperature;
- fuels and oils
- road surface including pot holes and dust

2.6 Contingency Plan and Risk Management Plan

Extreme wet weather would mean the event would not be able to be conducted on safety grounds.

Rally Risk Management Procedure

Introduction

Risk Management is viewed in the context that it is an integral component of the event management. Adopting risk management practices will ensure that the rally remains at the forefront of safety and thus protects the longevity of the sport.

Risk Context

The risk management strategy adopted for this event is restricted to the issues arising from a safety focus.

Risk Identification

Risk Identification	Areas of Impact				
Source of Risk	Health and Well Being	Cost	Schedule of Activities	Environment	Event Good Will
Competitors	X	X	X	X	X
Officials	X	X	X	X	X
Spectators	X	X	X	X	X
Members of the Public	X	X			X
Environment		X		X	
Media	X		X		X

Measure of Consequence

Level	Descriptor	Detail of Descriptor
1	Insignificant	No injuries, no financial or environmental impact
2	Minor	First Aid Treatment Required Minimal environmental impact Minor financial impact
3	Moderate	Medical Treatment required, no outside event assistance required Some damage requiring remedial action to environment Financial impact limited
4	Major	Injuries to an extent requiring external assistance Environment impacted to major level Will require financial input from event Catastrophic
5	Catastrophic	Death, Devastating environmental impact Huge financial impact on the sport

Likelihood

Level	Descriptor	Description
A	Almost certain	It is expected it would happen on the event
B	Likely	Will probably occur on the event
C	Possible	Might occur during the event
D	Unlikely	Could occur during the history of the event
E	Rare	Would only occur in exceptional circumstances

2.7 Site Plan

Traffic Management Plan and Safety Plan

A Traffic Management Plan and a Safety Plan including protocols for dealing with critical incidents, evacuations, spectators and officials will be prepared and presented when an agreement has been reached with Council on the event format and roads to be used.

3 PUBLIC HEALTH

3.1 Temporary Food Stalls

Dependent upon Council agreements food will be available at the event. However, the organisers of the rally will not be responsible for the cooking or sale of food. It is anticipated that local community clubs will take this opportunity to benefit from ‘outside monies’. Both Showgrounds have existing facilities for food preparation and sales. The only temporary food stall that MAY be utilised is at the major spectator point on Sunday. Again it is anticipated that a local community club will take this opportunity to benefit from the rally and it will be their responsibility for Council approvals.

3.2 Toilets

Again dependent upon Council agreements the only venue where a crowd will gather that does not have public amenities available is the Spectator Point on Sunday. How this is managed will need to be negotiated with Council.

3.3 Alcohol

We as the organisers of the rally do not intend selling alcohol at the event. An approach may be made to a local community body, the Showground Trust or a local Hotel for them to sell alcohol at the Kyogle Showground.

3.4 Water

The organisers provide water to our officials. Advice is also given to officials about the importance of hydration.

3.5 Shelter

The organisers provide shelter to our officials at main control points and advise those to whom shelter is not provided to supply their own if they are going to be exposed to the elements for an extended period of time. Advice is also given to officials about sun and weather protection.

3.6 Waste Management

Again dependent upon Council agreements the only venue where a crowd will gather that does not have public amenities available is the Spectator Point on Sunday. Again it is anticipated that a local community club will take this opportunity to benefit from the rally. How this is managed will need to be negotiated with Council. It is hoped an agreement can be reached whereby Council supply bins either free of charge or at a nominal fee.

3.7 Noise

The timing of the road closures is considered carefully to minimise noise concerns with residents. The night stages are Kyogle Showgrounds and Woodenbong. Both are conducted in the early evening and are Spectator Points designed for locals to attend. For six years the Woodenbong Stage has become a highlight of the rally with both the locals and competitors. All vehicles are scrutineered prior to the event, and during the event if required, and must conform to ADR noise emission levels.

4 PUBLIC SAFETY

4.1 Security & Crowd Control

The organisers are at pains to secure the roads being used and spectator points. This has been addressed in 1.1.3 in reference to *Road Closure Procedures, Advertising & Notification of Road Closures, Event communications, Spectators, Traffic Management Plan and Safety Plan*.

4.2 Police Contact

The NSW Police Department are part of the agreement process regarding the closure of roads for the event. An Event Overview, as well as the Traffic Management Plan and Safety Plan, including the timing and location of spectator points, are forwarded to them.

We as the organisers encourage the Police to attend and they have always been helpful in that respect. We have had a history of working closely with the Police.

4.3 Place of Public Assembly

All places of Public Assembly are outside venues. A Safety Plan for these venues will be provided.

4.4 Lighting and Power

Both the Woodenbong Showground and the Kyogle Showgrounds will be the only venues using mains power. The night spectator point in Woodenbong will be lit via trailer mounted and generated flood lights.

4.5 Temporary Structures

The organisers do not intend for any temporary structures to be erected.

4.6 Fireworks and Pyrotechnics

The organisers do not intend for any Fireworks or Pyrotechnics to be used.

5 INSURANCE

5.1 Liquor Licences

As stated earlier, we as the organisers of the rally do not intend selling alcohol at the event. An approach may be made to a local community body, the Showground Trust or a local Hotel for them to sell alcohol at the Kyogle Showground.

5.2 Public Liability Insurance

As with all CAMS permitted events the Border Ranges Rally organisers will obtain Combined Public and Products Liability Insurance issued by OAMPS. The GCTMC Inc pays a substantial fee for insurance to the Confederation of Australian Motorsport (CAMS) who issues a permit to conduct the event. Insurance cover is part of this permitting process.

Details can be viewed on the CAMS web site. However, an example of the cover is detailed in the Section 144 Permit Agreement for the 2012 Border Ranges Rally issued by the Council.

5.3 Health and Safety Permits

Health and Safety Permits will be addressed with Council as part of the permitting process.

6. TRAFFIC AND PEDESTRIAN MANAGEMENT

6.1 Traffic Management Plan

A Traffic Management Plan and a Safety Plan including protocols for dealing with critical incidents, evacuations, spectators and officials will be prepared and presented when an agreement has been reached with Council on the event format and roads to be used.

6.2 Road Closures

Discussions with Council regarding roads to be closed will be held and advice from Council sought. When agreed a specific application will be presented to Council in a detailed Traffic Management Plan. The organisers will advertise the road closures at our expense.

7. INCIDENT MANAGEMENT PLAN

7.1 Event / Incident Control Centre

A detailed Safety Plan including protocols for dealing with the Event Control Centre will be prepared and presented when an agreement has been reached with Council on the event format and roads to be used.

7.2 Incident Management Plan Including First Aid Arrangements

A detailed Safety Plan including protocols for dealing with critical incidents, evacuations, and First Aid arrangements will be prepared and presented when an agreement has been reached with Council on the event format and roads to be used.

7.3 Incident Management Contact Details

A detailed Safety Plan including protocols for dealing with critical incidents regarding contact details will be prepared and presented when an agreement has been reached with Council on the event format and roads to be used.

7.4 Fire Fighting Equipment

The RFS will be stationed at each Service Park and at the start of each competitive stage. There will be a fire extinguisher at the end of each stage and all competition vehicles are equipped with extinguishers.

7.5 Fire Danger Period

The fire danger period was considered and discussed with the RFA when choosing the date of the event.

7.6 Lost and Stolen Property / Lost Children

The event Head Quarters will be the location to report lost and stolen property as well as lost children. At the spectator points the officials in charge will take on this responsibility.

7.7 Incident Reports

The governing body of the sport of rallying CAMS has a specific procedure to follow when handling and recording Incident Reports.

8. EVENT PROMOTION

8.1 Ticketing

The organisers do not expect at this time that tickets will be required for spectators to attend the event.

8.2 Signage

The organisers will work with the RTA and Council to erect signage for road closures and also produce and post signage to manage spectators and competitors at the event.

8.3 Health Promotion

The organisers will post signage detailing warnings and procedures regarding attending Spectator Points.

8.4. Advertising

The organisers will work with Council, Media and the Press to promote the event. Where possible information on safe procedures when attending the event will be promoted.

9. DOCUMENT TRACEABILITY

9.1 Keeping documents and information

The organisers keep records of the event organisation on computer and in hard copy.

9.2 Documents to be kept

The organisers keep records of the event organisation on computer and in hard copy.

10. USEFUL CONTACT NUMBERS

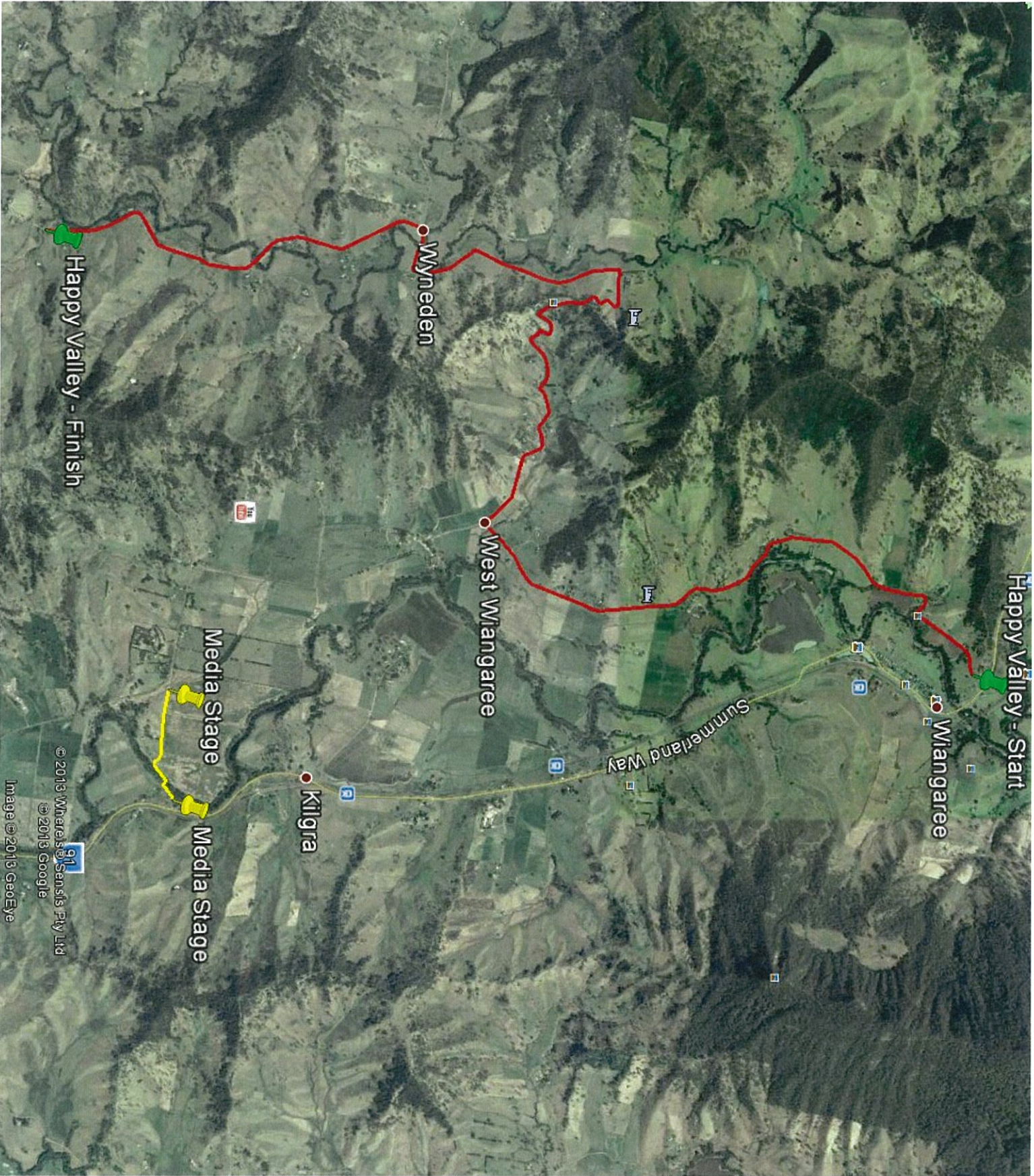
Correspondence: Secretary John Careless
2012 Border Ranges Rally
PO Box 8582
Gold Coast Mail Centre, Qld 9726
Email ... rjcareless@gmail.com

Organising Committee

Clerk of the Course	Stephen Davies	0405100021
Deputy Clerk of the Course	Gary Mitchell	0409896295
Secretary	John Careless	0755348986 (H) 0413250005
Assistant Clerk of the Course	Brad Winter (Local Rep)	0407604477

Proposed schedule 2013 Border Ranges Rally prepared for the Kyogle Council

Day	Action	Venue and or 'Stage'	Times
Thursday 8 th	Media Promotional Drives	Baileys Bridge Road. Start at the intersection of Baileys Bridge Road and West Wiangaree Road and finish at Summerland Way.	Road closed at 10.00am and Opened at 2.00pm
Friday 9 th	Recognizance of roads Note: Will NOT require road closures	Kyogle and Woodenbong	8.30am to 4.30pm
Friday 9 th	Cars on display	Kyogle Showgrounds	6.00pm to 8.30pm
Saturday 10 th	Stages based around Woodenbong Service Park at Woodenbong Showgrounds	Boomi Creek 1 & 2 Starting at Northern end of The Glen Rd (near the Junction with Watsons Rd) to the Finish at northern driveway(large Tree) at the last house on Boomi Creek Rd (north of junction Boomi Creek Rd and Bonalbo-Urbenville Rd) [This is to allow the house owners to be free to come and go] Woodenbong 1 & 2 - Starting on centre of Dalmorton St (between McPherson and Richmond St then into Boomi Creek Rd then into Old Bruxner Rd to the Finish near the junction with Mount Lindesay Hwy. Then Finish LEG at Woodenbong Showgrounds.	Road closed at 10.00am and Opened at 6.00pm Road closed at 6.00pm and Opened at 10.300pm
Sunday 11 th	Stages based around Kyogle Service Park at Kyogle Showgrounds Finish and Presentation	Happy Valley 1 and 2 Starting west of the intersection of West Wiangaree Rd (or Wiangaree Back Rd) and Summerland Way leaving the house clear for access, then right into Wyndam Range Rd (or Wyndam Rd) then left into Upper Eden Creek Rd then left into Eden Creek Rd then Finish just north of the intersection with Afterlee Road and Eden Creek Rd. Hillyards Road 1 and 2 Starting east of railway line on Webbs Rd then left onto Hillyards Rd (Back Creek Rd) then Finish near the junction of Bentley Rd and Kyogle/Lismore Rd. Kyogle - Stratheden Street and Roxy Lane	Road Closed at 9.00am and Opened at 3.30pm Road Closed at 9.30am and Opened at 4.00pm 1.00pm to 6.00pm



Happy Valley - Finish

Wyneden

West Miangaree

Happy Valley - Start

Wiangaree

Media Stage

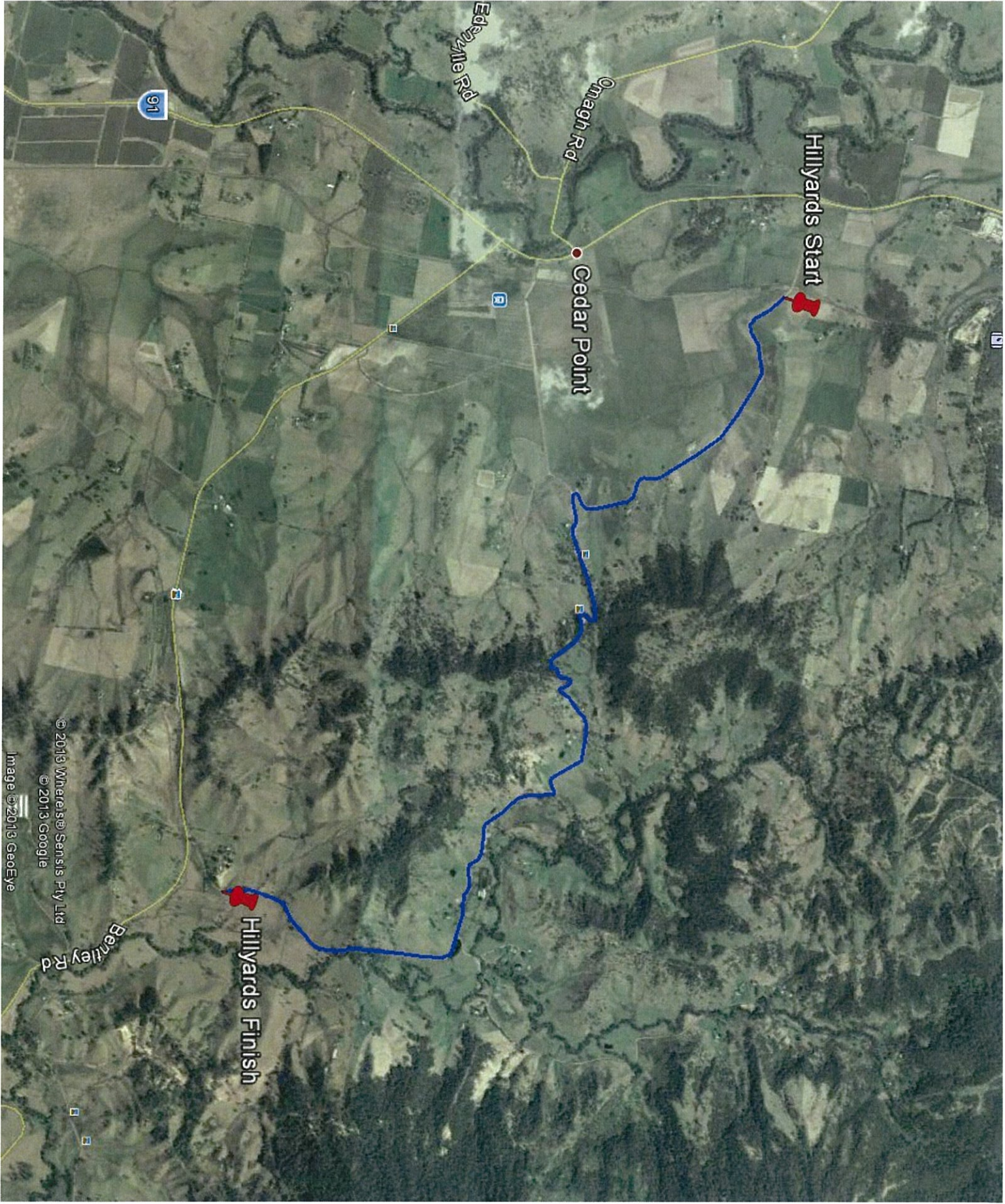
Kilgira

Media Stage

Summerland Way

© 2013 Wheresisat Sensis Pty Ltd
© 2013 Google

Image © 2013 GeoEye



Hillyards Start

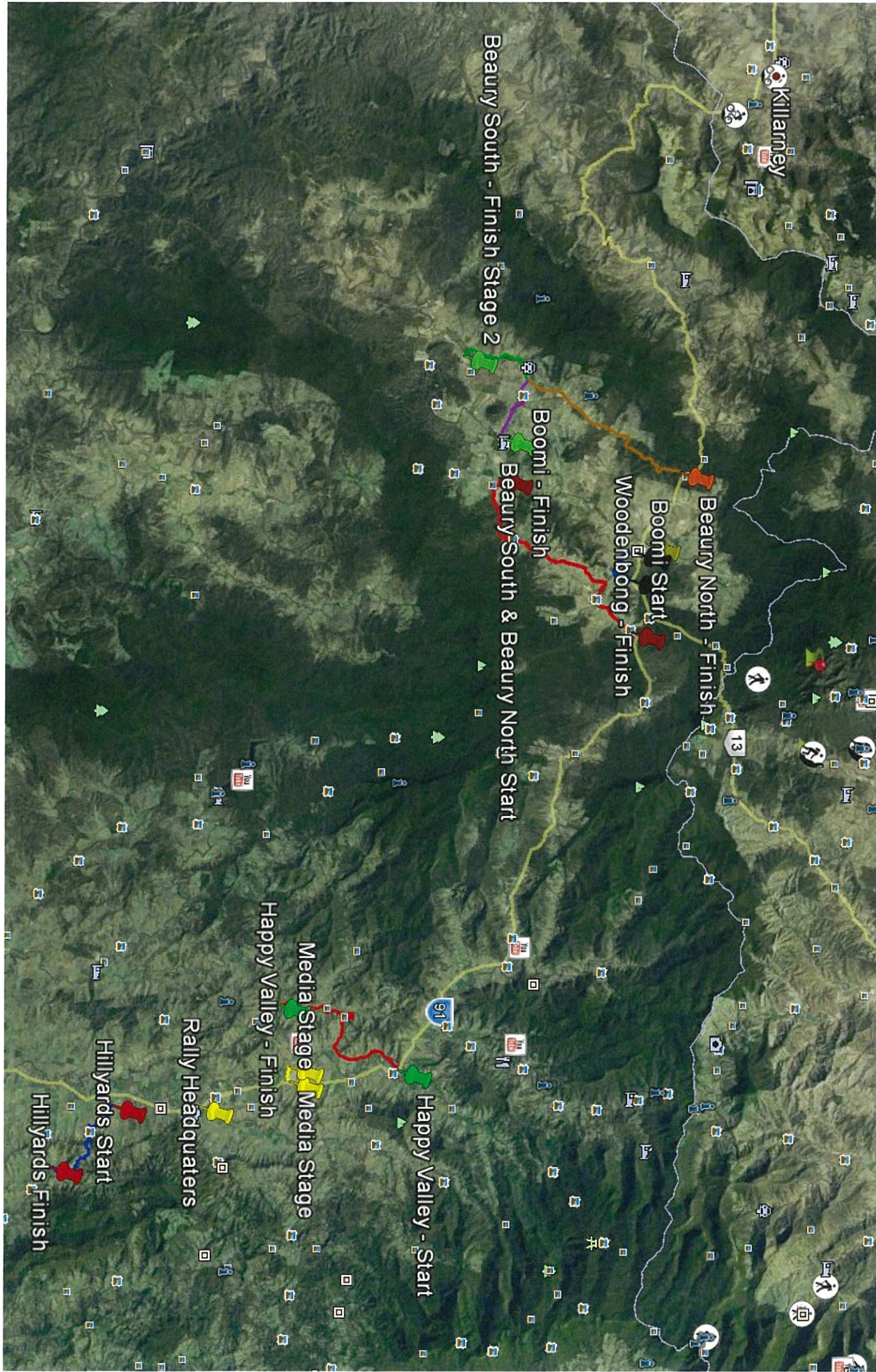
Edenville Rd
Omagh Rd
Cedar Point

Hillyards Finish

Bentley Rd

91

© 2013 Where's@Sense's Pty Ltd
© 2013 Google
Image © 2013 GeoEye



Killarney

Beaury South - Finish Stage 2

Beaury North - Finish

Boomi Start

Woodenbong - Finish

Boomi - Finish

Beaury South & Beaury North Start

Happy Valley - Finish

Media Stage

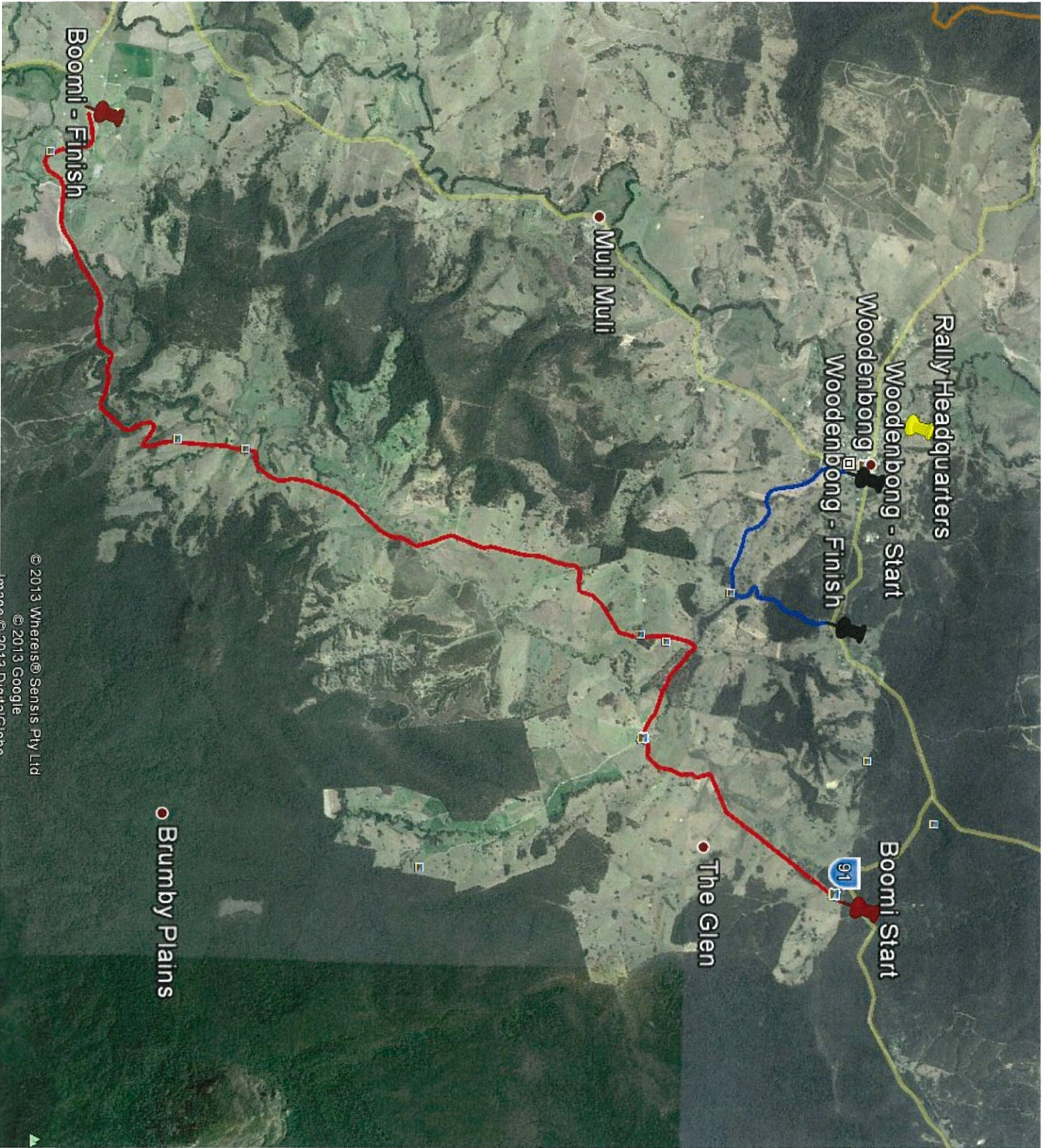
Happy Valley - Start

Rally Headquarters

Hillyards Start

Hillyards Finish





Rally Headquarters

Woodenbong - Start

Woodenbong

Woodenbong - Finish

Boomi Start

The Glen

Muli Muli

Brumby Plains

Boomi - Finish

© 2013 Whereis@Sensis Pty Ltd

© 2013 Google

mapdata=2013-04-14/14014210100