

# **Kyogle Council**



## **Financial Reports**

**30 June 2017**

**Rates Statement**

**Statement of Bank Balances**

**Summary of Investments**

**Councillor Travel**

**NOTE: All Financial Data presented is unaudited at the date of presentation to Council**

## KYOGLÉ COUNCIL RATES STATEMENT AS AT 30 JUNE 2017

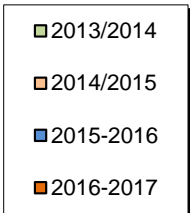
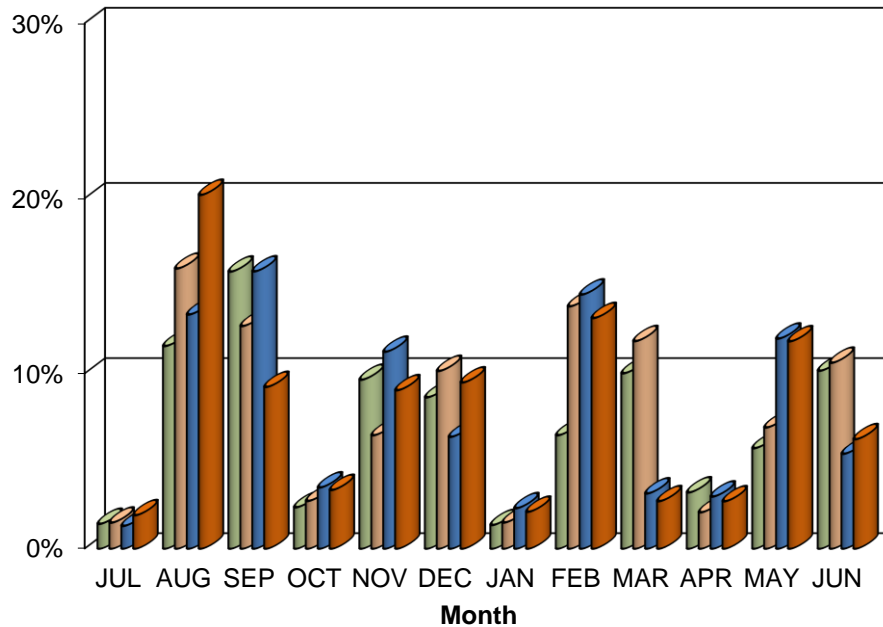
	ARREARS 1-Jul-2016	NET CHARGES 2016-2017	PAYMENTS	OUTSTANDING BALANCE 30/6/2017	ARREARS 30/6/2017	% TOTAL COLLECTED incl. ARREARS	% ARREARS COLLECTED 2016-2017
RATES, SERVICES AND INTEREST	831,639.87	9,942,939.51	9,904,729.75	869,849.63	306,277.85	91.93%	63.17%

PRESENTED TO COUNCIL JULY 2017

**Note:**

Some ratepayers have made arrangements, whilst others are at different stages of legal action.

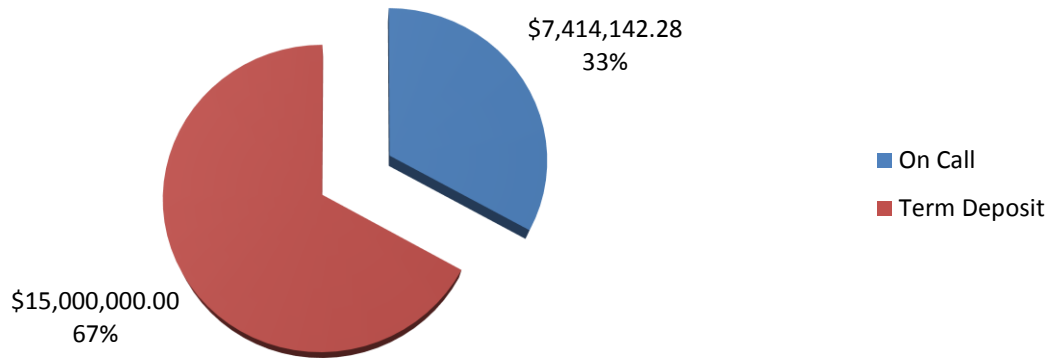
### Rate Collections Analysis % Collected Each Month



**KYOGLE COUNCIL FINANCIAL ANALYSIS REPORT AS AT 30/06/2017**

Institution	Investment Type	Investment Date	Maturity Date	Interest Type	Interest Frequency	Interest rate	Investment Amount	% of Portfolio
CBA	On Call	At Call	At Call	Variable	Monthly		7,414,142.28	33.08%
					<b>Total Cash at Call</b>		<b>7,414,142.28</b>	<b>33.08%</b>
NAB	Term Deposit	22-May-17	21-Jul-17	Fixed	Maturity	2.30%	2,000,000.00	8.92%
Suncorp Metway	Term Deposit	23-May-17	24-Jul-17	Fixed	Maturity	2.20%	1,400,000.00	6.25%
Suncorp Metway	Term Deposit	05-Jun-17	04-Aug-17	Fixed	Maturity	2.35%	2,000,000.00	8.92%
CBA	Term Deposit	06-Jun-17	07-Aug-17	Fixed	Maturity	1.80%	1,500,000.00	6.69%
NAB	Term Deposit	05-Jun-17	08-Aug-17	Fixed	Maturity	2.25%	3,000,000.00	13.38%
Bankwest	Term Deposit	09-Jun-17	09-Aug-17	Fixed	Maturity	2.45%	3,000,000.00	13.38%
Suncorp Metway	Term Deposit	20-Jun-17	21-Aug-17	Fixed	Maturity	2.20%	2,100,000.00	9.37%
					<b>Total Cash at Call</b>		<b>15,000,000.00</b>	<b>66.92%</b>
				<b>Total Investment Portfolio</b>			<b>\$22,414,142.28</b>	

### Investments Graph



<b><u>Kyogle Council</u></b>	
<b>STATEMENT OF FUND BALANCES as at</b>	
<b>30-Jun-17</b>	
Fund	Closing Balance
<b>General Fund</b>	
Unrestricted	10,866,675.52
Internally Restricted	4,240,389.00
State Highways	1,990,020.69
Quarries	627,119.07
Plant	1,737,621.27
Externally Restricted	546,839.90
<b>Total General Fund</b>	<b>20,008,665.45</b>
<b>Restricted</b>	
Water Supplies	1,788,417.29
Sewerage Systems	879,802.31
Domestic Waste	(278,749.56)
Trust Fund	16,006.79
<b>Total Restricted</b>	<b>2,405,476.83</b>
<b>Total Consolidated Funds at Bank</b>	
	<b>22,414,142.28</b>

## COUNCILLORS TRAVEL EXPENSES Jun-17

Councillor Name	Kilometres Claimed		Current Rate per Kilometre	Amount Reimbursed	
	Jun-17	YTD		Jun-17	YTD
K. Thomas	0	702	\$0.78	\$0.00	\$547.56
H. Doolan	0	0	\$0.78	\$0.00	\$0.00
J. Wilson	0	0	\$0.78	\$0.00	\$0.00
J. Burley	198	1,278	\$0.68	\$134.64	\$869.04
M. Creedy	0	282	\$0.78	\$0.00	\$219.96
R. Dwyer	0	0	\$0.78	\$0.00	\$0.00
D. Mulholland	0	5,930	\$0.78	\$0.00	\$4,271.90
M. Reardon	0	370	\$0.78	\$0.00	\$251.60
L. Passfield	0	3,728	\$0.78/\$0.68	\$0.00	\$2,755.90
M. May	0	0	\$0.78	\$0.00	\$0.00
E. Grundy	0	5,820	\$0.78	\$0.00	\$4,539.60
<b>Total</b>	<b>198</b>	<b>18,110</b>		<b>\$134.64</b>	<b>\$13,455.56</b>

### Notes

- (1) The above figures represent amounts actually paid.
- (2) The amounts paid in the current month will relate to claims for travel in prior months
- (3) Some councillors may have claims outstanding for more than one month.