

Kyogle Council



Financial Reports

31 January 2017

Rates Statement

Statement of Bank Balances

Summary of Investments

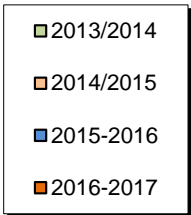
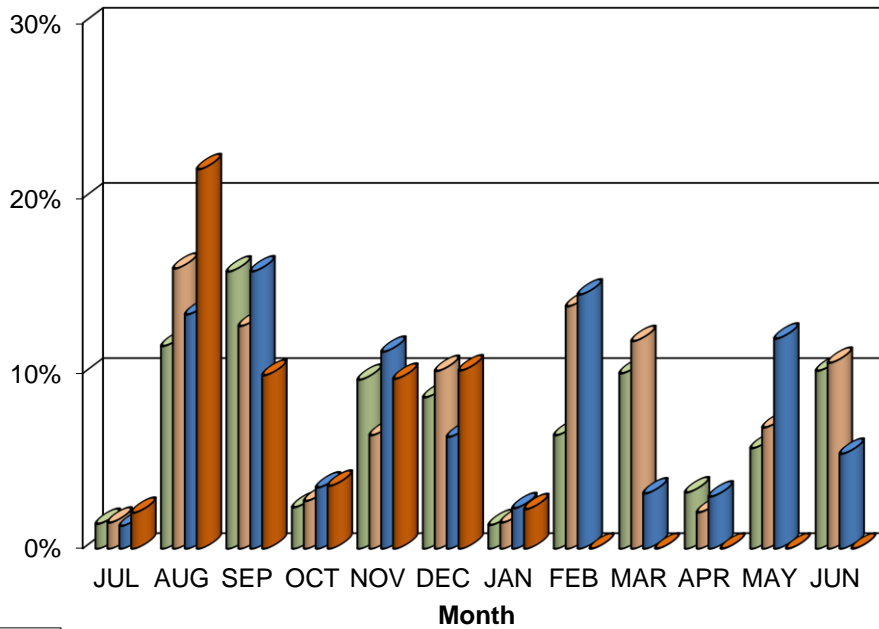
Councillor Travel

NOTE: All Financial Data presented is unaudited at the date of presentation to Council

KYOGLÉ COUNCIL RATES STATEMENT AS AT 31 JANUARY 2017

	ARREARS 1-Jul-2016	NET CHARGES 2016-2017	PAYMENTS	OUTSTANDING BALANCE 31/1/2017	ARREARS 31/1/2017	% TOTAL COLLECTED incl. ARREARS	% ARREARS COLLECTED 2016-2017
RATES, SERVICES AND INTEREST	831,639.87	9,214,238.95	5,956,932.54	4,088,946.28	482,849.43	59.30%	41.94%
PRESENTED TO COUNCIL FEBRUARY 2017							
Note: Some ratepayers have made arrangements, whilst others are at different stages of legal action.							

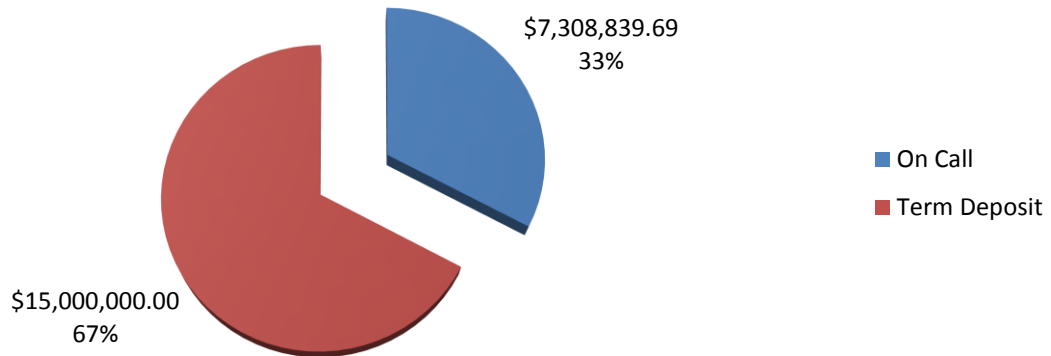
Rate Collections Analysis % Collected Each Month



KYOGLE COUNCIL FINANCIAL ANALYSIS REPORT AS AT 31/01/2017

Institution	Investment Type	Investment Date	Maturity Date	Interest Type	Interest Frequency	Interest rate	Investment Amount	% of Portfolio
CBA	On Call	At Call	At Call	Variable	Monthly		7,308,839.69	32.76%
					Total Cash at Call		7,308,839.69	32.76%
Suncorp Metway	Term Deposit	05-Dec-16	03-Feb-17	Fixed	Maturity	2.20%	2,000,000.00	8.97%
CBA	Term Deposit	06-Dec-16	06-Feb-17	Fixed	Maturity	2.05%	1,500,000.00	6.72%
NAB	Term Deposit	07-Nov-16	06-Feb-17	Fixed	Maturity	2.60%	3,000,000.00	13.45%
Bankwest	Term Deposit	11-Nov-16	09-Feb-17	Fixed	Maturity	2.50%	3,000,000.00	13.45%
Suncorp Metway	Term Deposit	12-Dec-16	10-Feb-17	Fixed	Maturity	2.20%	2,100,000.00	9.41%
NAB	Term Deposit	20-Jan-17	21-Mar-17	Fixed	Maturity	2.37%	2,000,000.00	8.97%
Suncorp Metway	Term Deposit	23-Jan-17	24-Mar-17	Fixed	Maturity	2.20%	1,400,000.00	6.28%
							Total Cash at Call	
							15,000,000.00	67.24%
				Total Investment Portfolio			\$22,308,839.69	

Investments Graph



Kyogle Council	
STATEMENT OF FUND BALANCES as at	
31-Jan-17	
Fund	Closing Balance
General Fund	
Unrestricted	10,672,925.08
Internally Restricted	4,240,389.00
State Highways	1,121,011.30
Quarries	428,535.33
Plant	2,091,025.86
Externally Restricted	546,839.90
Total General Fund	19,100,726.47
Restricted	
Water Supplies	2,344,288.28
Sewerage Systems	945,770.47
Domestic Waste	(93,074.32)
Trust Fund	11,128.79
Total Restricted	3,208,113.22
Total Consolidated Funds at Bank	22,308,839.69

COUNCILLORS TRAVEL EXPENSES Jan-17

Councillor Name	Kilometres Claimed		Current Rate per Kilometre	Amount Reimbursed	
	Jan-17	YTD		Jan-17	YTD
K. Thomas	0	270	\$0.78	\$0.00	\$210.60
H. Doolan	0	0	\$0.78	\$0.00	\$0.00
J. Wilson	0	0	\$0.78	\$0.00	\$0.00
J. Burley	434	650	\$0.68	\$295.12	\$442.00
M. Creedy	0	282	\$0.78	\$0.00	\$219.96
R. Dwyer	0	0	\$0.78	\$0.00	\$0.00
D. Mulholland	62	1,801	\$0.68	\$42.16	\$1,224.68
M. Reardon	0	370	\$0.78	\$0.00	\$251.60
L. Passfield	1,377	2,255	\$0.78/\$0.68	\$982.76	\$1,687.76
M. May	0	0	\$0.78	\$0.00	\$0.00
E. Grundy	0	2,060	\$0.78	\$0.00	\$1,606.80
Total	1,873	7,688		\$1,320.04	\$5,643.40

Notes

- (1) The above figures represent amounts actually paid.
- (2) The amounts paid in the current month will relate to claims for travel in prior months
- (3) Some councillors may have claims outstanding for more than one month.