

Kyogle- The natural way

Kyogle is a LGA that has amazing natural resources, that have grown from our location and how we have progressed and grown from the Beautiful natural environments. However, we have not lost touch or destroyed the natures we have, instead encompassed them with how we grow.

This proposal is about taking these natural features and incorporating them in villiage's so travellers can see those hidden parts of each town, murals and signs throughout.

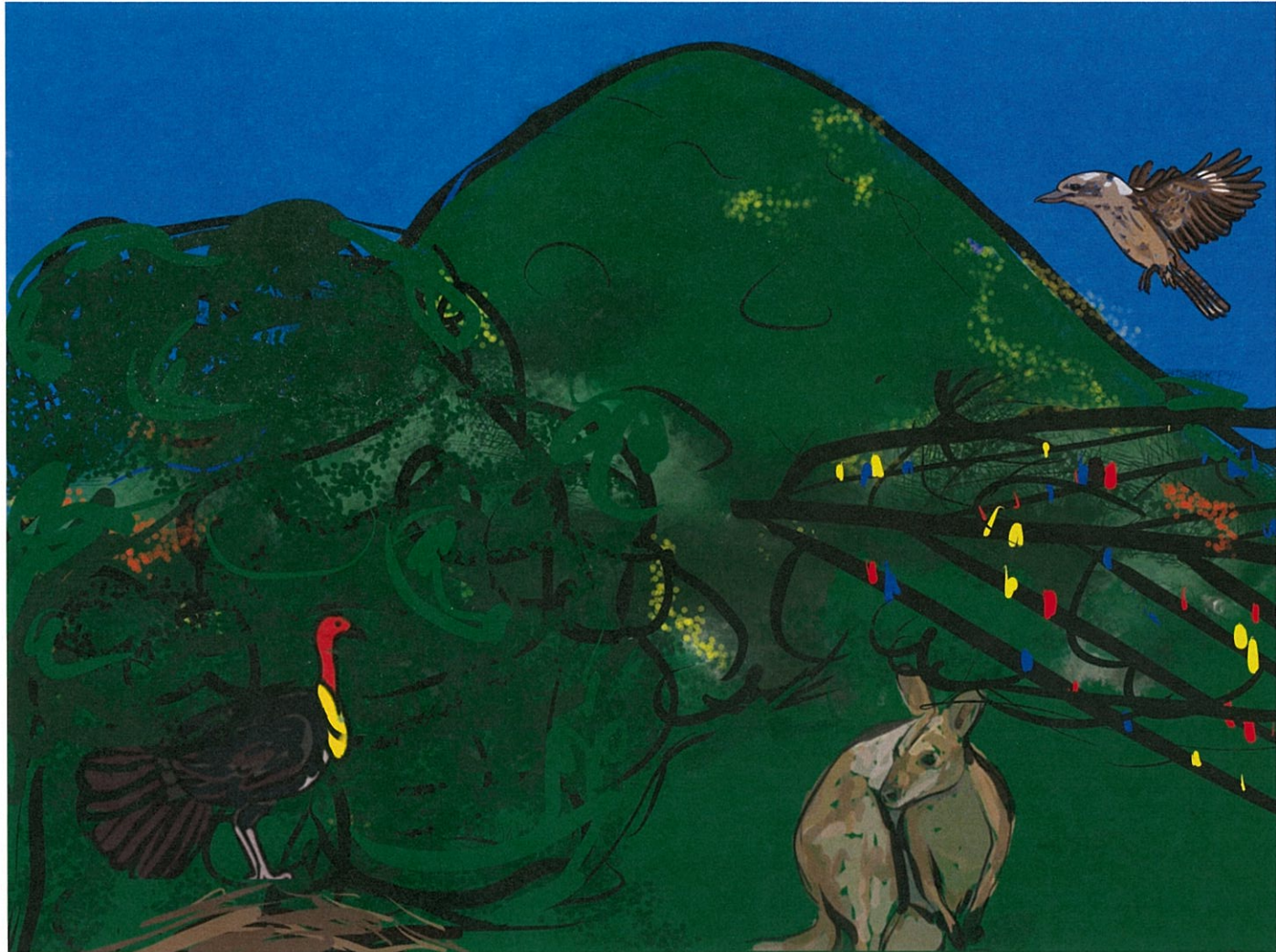
Kyogle Slogans

- Small village, big community
- The outside in... what is outside the town comes into the town; fresh clean food, milk, creativity, nature.. you can live in Kyogle and feel like you are in the country or the city because the variety and diversity that is afforded to you can cater to all people.
- Park, pasture, plate
- Quality people, Quality environment, Quality palate
- Gateway to everywhere
- Slow down and accept the hospitality
- Once you come for a stay, a part of us stays with you for a lifetime
- You can take town out of the country but you cant take the country out of the town
- Hidden nature niche at the end of every street
- Where the wallabies join you for breakfast while being serenaded by magpies and kookaburras.

Alternative logos' one without animals and one with; in line with branding concept of nature within.



- **Kyogle:** Turkey and Wallaby on fairymount. This plays around with the concept of 'Outside in'. Where Kyogle has the nature that merges with the backyard.



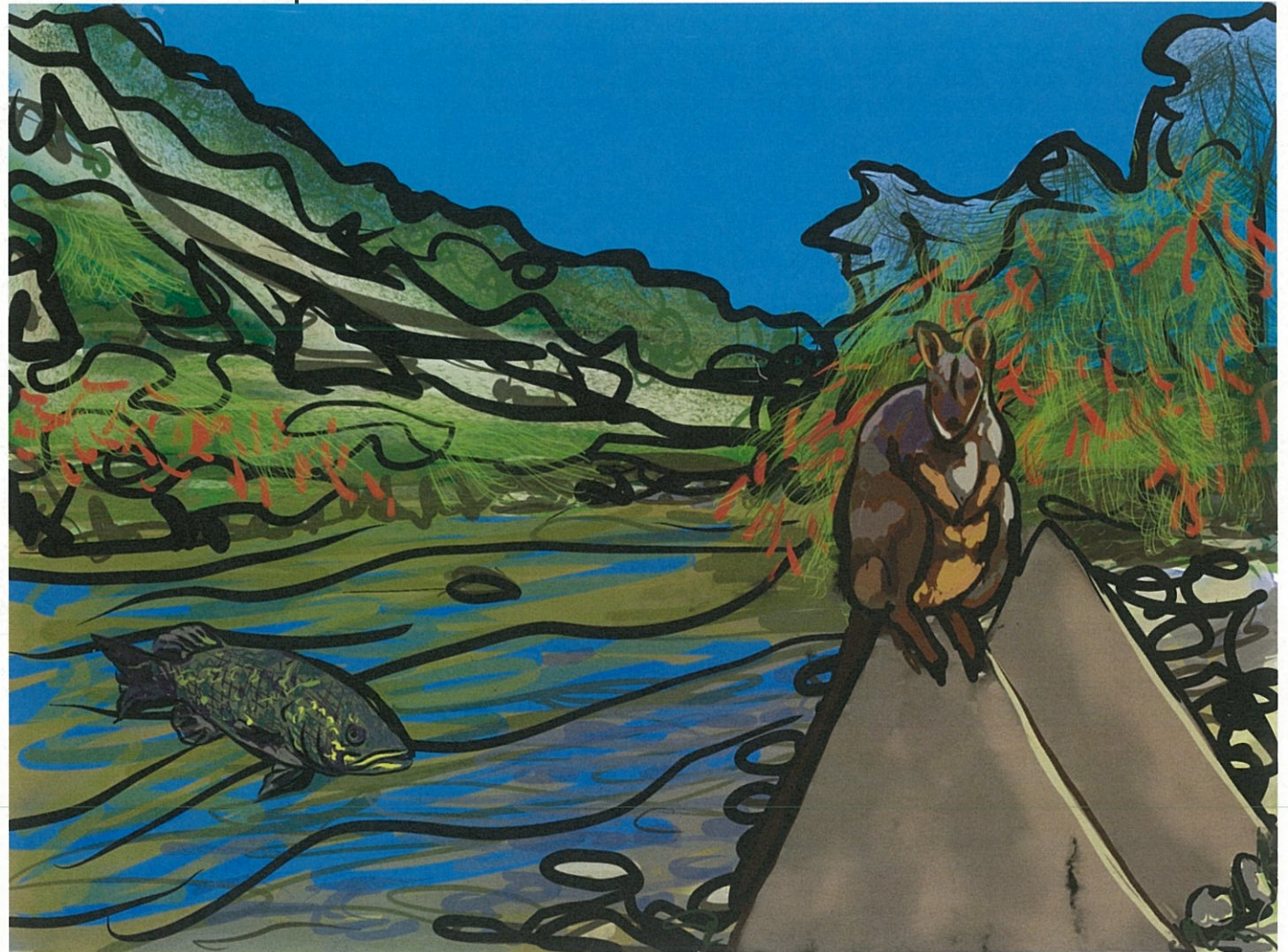
- **Bonalbo:** Bloodwood, corner of heritage building and Wedgetails. Bonalbo has named for the Bloodwood tree and the Building signifies the heritage of the town and the Wedgetails are the wild that hangs aver the town.



- **Old Bonalbo:** is situated with 'Haystack mountain behind it. Old Bonalbo started off as a timber town which quick grew into a cattle farming and dairy area, hence the Dairy cows.



- **Tabulam:** Clarence river, Clarence cod and Rock Wallaby. Both animals are indigenous to Tabulam Area and the Rock Wallaby is perched on one of the Blocks left over from world war 2 when Australia was preparing for when Japan invaded.



- **Woodenbong:** Gum trees and Bellbirds with Mount Lindesay peaking out between the trees.



- **Grevillia:** Sawmill workers cottages, harkening back to the timber industry, Silky Oaks and the Rainbow Lorikeets that feed on them.



- Old Grevillia: Know for its endangered bat colony and iconic two hill landmarks.



Mallanganee: know for its beautiful Candle wood trees and the King Parrots that are frequent visitors in the town. All set with the Hogarth Range in the background.



- **Mummulgum:** The heritage churches and with a storm rolling in from the Hogarth range in the back ground. With an old Stage coach in reference to its past as a stopping post with a flock of white Cockatoo's that have been feeding on the rolling paddocks filled grass seeds.



- **Cawongla:** Rainforest and Green Tree Frogs rainbow looking through to the Boarder ranges.



- **Wiangaree**; Nestled beneath the Helmet this natural landmark houses Wiangaree.. it is know for it's Equine events and Campdrafts it also has indigenous significance with turtles. These share companionship with the Native a Wood Ducks in the lagoon at the edge of town.

